



The CAW Newsletter is the official publication of the Capital Area Woodturners, Inc., a chapter of the AAW, and is published for the information of its members.

CAW Newsletter

<http://www.capwoodturners.org>

AUGUST 2006

SPECIAL POINTS OF INTEREST:

- ANDI WOLFE
- PRESIDENT'S MESSAGE
- ACTIVITIES INFORMATION

INSIDE THIS ISSUE:

- Skill Enhancement 2
- Workshop Information 4
- About Our Members 5
- Newbie's Notes 6
- Call of the Lathe 7
- Show and Tell 8

Our Demonstrator for August - Andi Wolfe

The natural world offers many inspirations, especially when it is examined at high magnification. I am a botanist by day and a part time woodturner in whatever spare time I can glean from the week. My botanical training has served me well in my woodturning endeavors.

My work has focused on the ploy botanical motifs. Some For example, I sometimes use ous flowering stages of a par- ings in maple or oak leaves. cal unless one is used to see times enhance a turning by cellular structures of plants. tanical designs into my turn- and oak leaf designs for my the work of Grinling Gibbons 18th centuries.



use of surface enhancements that em- of the botanical inspirations are obvious. a botanical print motif to illustrate var- ticular plant, or I'll cover one of my turn- Other designs are less obviously botani- plants at the microscopic level. I some- carving a textural motif inspired from Most recently, I have been carving bo- ings in 3D. I'm especially fond of maple carved vessels. My goal is to emulate - the master carver from the 17th and

Experimentation is part of my design process. I view wood as a medium for exploration and not just a material that has a pretty grain pattern. I tend to use woods that are fine grained with subtle figuring so that my botanical designs become part of the whole vessel, complementary to the wood as opposed to a distraction to the eye. My goal is to enhance the surface so that the vessel becomes a three dimensional canvas that entices the viewer to explore all aspects of the piece. My designs are carved using several different rotary carving tools (e.g., Foredom SR, Foredom Micromotor, and Powercrafter) or via a burnt relief technique I developed using pyrography equipment. Texturing via carving and pyrography are common elements in my work as is the use of color.

Meeting Information

Meeting Announcement:

Date: Saturday, August 12th, 2006
Time: 9:00 AM - 3:30 PM

Place: Bryant Adult Educa- tion Ctr. 2709 Popkins Lane, Alexandria, VA

Directions to the monthly meeting:

From Virginia or Mary- land, take I-495/I- 95 to- wards the Wilson Bridge over the Potomac River.

Take Exit 177A (Rt. 1 South) on the Virginia side. Ap- proximately 1.9 miles south of the Beltway, you will pass the Beacon Mall complex with Lowe's Home Improve- ment Warehouse on your right. Drive past the main entrance to Beacon Mall, go 4 more stop lights - about 1/2

mile. The 4th stop light will be Popkins Lane. Turn Left onto Popkins Lane and go 2 blocks. Bryant Learning Center entry will be on your right. Drive to the East side of the building. Plenty of parking on the side or in the rear of the building.

The entrances to the wood- working shop and meeting rooms are off the back cor- ner of the east side of the Bryant Center.



Here are some examples of Andi's work and what you will have the opportunity to see her produce during the demonstration



Monthly Program Details for August 12th - **\$5.00 DEMO FEE**

8:30 AM	Help set up for the demonstration. Look over the For Sale items in the equipment room. Help get the coffee bar going or have a cup of coffee and a donut with your fellow turners. Discuss the items in the Show & Tell table. Rent a video. Talk tips and techniques with others.
9:00 AM	Show and Tell
9:30 AM	A normal business meeting. A raffle will be offered. Photos of member items will be taken for the next CAW Newsletter. The tape library will be open. A silent auction table will be available for donated wood and items
10:00 AM	Andi will start the day with a short turning demo - usually a small bowl just to illustrate how to make the canvas for her surface enhancement techniques. She will then demonstrate her emphasis on surface enhancements to her turnings. As you read on page 1, her preference for nature's forms will be evident during the demonstration.

Skill Enhancement Workshop

At Bryant School
WED. 08/09/06
9:00AM - 3:00PM
TUESDAY 08/29/06
9:00AM - 3:00PM
 Any special requests contact:

CA Savoy at
cadisavov@cox.net
 Or: Don Riggs at
driggs11@cox.net
 Or: Don Johnson at
drjpapaw@aol.com
 Or: Aaron Grebeldinger at
erph@erols.com

PLEASE NOTE::: There is a shop charge of \$5.00. If you use any tool, i.e., band saw, lathe, drill press etc. the charge will apply. If you come to visit and just watch, then - no charge.

YOU MUST ALSO BE A MEMBER OF THE AMERICAN ASSOCIATION OF WOODTURNERS IF YOU WANT TO USE ANY OF THE TOOLS

CAW 2006 Officer Roster
Position, Name
Contact Information

President, Frank Stepanski

228 Aquia Bay Ave
 Stafford, VA 22554-5327
 540-720-4202

woodturner@purespeed.com

Vice-President, Bob Holtje

2708 Willow Drive
 Vienna, VA, 22181
 703-281-1820

bob@holtje.com

Treasurer, Patrick O'Brien

200 N. Pickett St. #1108
 Alexandria, VA 22304-2118
 Tel. - days 703-519-5908

n. & wknds 703-751-0109

ohbewood@comcast.net

Secretary, Bob Reynolds

7627 Mineral Spring Court
 Springfield, VA 22153
 703-455-2931

reynoldsrf@aol.com

Program Director,

Bob Pezold

8422 Mt. Zephyr Drive
 Alexandria, VA 22309
 703-799-1034

rpezold@cox.net

Operations Director

C. A. Savoy

1309 Gatewood Drive
 Alexandria, VA 22307
 703-765-7268

cadjsavoy@cox.net

Newsletter Editor,

Richard Sherwood

11907 Bracken Court
 Bowie, MD 20720
 301-805-1020

richard@sherwoodswab.com

Club Support Volunteers

Don Kelley

- Show and Tell Photos

Bill Bearden

- Video Library

Aaron Grebeldinger

- Education Outreach

George Salinas

- Bryant Display Window

Jonathan Hess

- Raffles/Auctions

Ed Parelhoff

- CAW Clothes

Annie Simpson

- Mentor Program

All committee

volunteers

- Set-up, clean-up, coffee bar, etc.

If your address, phone, or email changes, notify Patrick O'Brien. This is essential to insure you receive the newsletter and other items that come to members.

ONEWAY ORDER

CA places orders throughout the month. Check your catalog or call up the ONEWAY website at www.oneway.on.ca to see what's available and email your order to CA at cadjsavoy@cox.net.

If you need something any time during the month, send him an email and he will order and have it to you within a week. Also check the ONEWAY website for the new turning tools .

Items can be picked up at Bryant School on the 2nd Wednesday or last Tuesday, during the Skill Enhancement workshops or at the monthly meetings or by special arrangements or orders can be shipped to you. You pay when you receive

your order.

CAW--ONEWAY SALE OF THE MONTH 20% OFF!!! ALL ONEWAY AND HALLAMSHIRE TURNING TOOLS , HANDLES, CHUCK SPURS, AND SAFE DRIVES + SHIPPING!!!!

COMPLETE SHARPENING SYSTEM!!!!

8" 1725 RPM SLOW SPEED GRINDER W/ WHITE ALUM. OX. WHEELS (60 & 120)

ONEWAY WOLVERINE GRINDING JIG ONEWAY VARI-GRIND GRINDING ATTACHMENT

T-DIAMOND TIP WHEEL DRESSER !!!! \$260.00 !!!!

All mounted on platform with 2- depth gauges and accessory holder.

CA Savoy::: HAPPY AND SAFE TURNING!!!

2006 Plans

Sept 09	Johannes Michaelson	Nov 11	Trent Bosch
Oct 14	Michael Mocho	Dec 09	Woodturner's Ball

Newbee Goes to the Show by Ed Karch

[This is a little after-the-fact but insightful anyway. Ed.] Yes my first craft show, the three day Waterford craft show. How did it work? You presented samples of your work for judging and if they liked your stuff you hauled a load to the mill in September and they inventoried it in. After the show you picked up the stuff that wasn't bought and you get paid for what was sold minus 25% consignment fee. The show was held last October just when the heavens opened and dumped rain for two days. My stuff was sheltered in the old mill but the general public stayed away in droves. I didn't go either until Sunday when I was scheduled for volunteer duty.

Tom Boley and I were the only turners in the mill. The mill has an occupancy limit of one hundred. Limiting access was done by requiring each person entering to carry one of 100 baskets. Enter with a basket, fill it with crafts and exit through the back door to the cash register. My job was to collect baskets at the back and run them back to the front. As everyone waited until the rain quit, Sunday was crowded and I ran baskets for six straight hours with emphasis on ran. How did the Newbee do? I took 59 different pieces and sold 24 which will cover my tuition for Dave Ellsworth's school. Two of the pieces were high end and were used by the set up crew to accent furniture. I didn't expect them to sell but it was fun watching people turn them over to check the price then quickly set them back down. I priced from \$10 for a light pull to \$300 for a large bowl. Highest sale was \$90 for a nice end grain ambrosia maple bowl.

The President's Message - Frank Stepanski

Good day all..

At our July meeting Mr. Matt Birchfield presented a very informative lamp making demonstration. For those who missed the live demonstration or wish to review the information presented, the CAW video library will have a couple copies available. You'll see a couple of photos of the demo toward the end of the newsletter.

Well we had our first go around of an abbreviated business meeting. I did not have anyone comment positively nor negatively on this new meeting format when we have guest turners. As we did not have any complaints, my guess is the accelerated business meeting is acceptable. Please let any CAW officer know if you feel we need to change.

CAW "**Peer recognition**" award.... The successful illusion of a smooth running CAW to include our meetings, Skill Enhancement workshops, annual picnic and Woodturners Ball can only be pulled off with an immense amount of in-the-background of many CAW members. These members should be properly recognized and, on occasion, presented with a token of our appreciation. Additionally it has been suggested CAW offer, on an occasional basis, a "**CAW Life Time Achievement**" award.

The CAW board agrees these are both honorable ideas and we are working out details of implementing both programs. This being stated, the one thing we do know: Both processes begin with nominations from fellow CAW members. The CAW board would like to open up the nomination process. If any CAW member is aware of anyone has made considerable contributions to our club or you notice someone who performs a task in the background, please bring this to the attention of the CAW board for "**Peer recognition**" consideration.

Nominations for the "**CAW Life Time Achievement**" award will require a bit more content than a simple mention; of course the awards will be a bit more significant. To qualify for CAW "**Life time Achievement**" CAW member contributions must go above and beyond the call of duty. Nominations for this award must be submitted to a CAW board member in writing, via e-mail, or a traditional hand written memo presented at any CAW event. Please contact a CAW member with your "**CAW Life Time Achievement**" award nominations. Please include the following in why you are recommending this member: what have they done to deserve this award, for how long have they been doing it, what impact has this member had on CAW. Please feel free to expand on these basic items. Looking forward to seeing everyone at our 12 Aug. meeting. Happy turning..

Information on Future Workshops by Bob Pezold

Workshops are conducted by professional woodturners. We have been fortunate with coordinating workshops in conjunction with all our visiting demonstrators. Additionally, on occasion we have professional turners who are in our local area and will offer a one-day workshop.

Workshops are conducted at the Bryant Learning Center, normal times are 08:30 – 3:30, lunch usually goes around 11:30. Fees charged for the workshops vary and will be announced with the workshop information. We conduct workshops on days the Bryant workshop is available.

Workshop signups. Class size is usually based on the complexity of the workshop. The more complex topics have a lower number of workshop attendees. I will place your name on the workshop list the day I receive payment. I will hold your payment until the day of the workshop. Once the workshop is filled, a standby list is started. If you're paying by check please, make out one check per workshop. Make checks payable to CAW. If you cannot attend a workshop you have paid for, please send me notification so a standby can be selected and notified to fill your position.

Workshops that will be put on by our demonstrators later in the year will be.

August Andi Wolfe For those of you that will be taking the Andi Wolfe workshops, you will need a wood burning set, such as the Detail Master. You will also need wood burning tips 6A, 10A and 7B. Because of the class size limitation, there will be two classes, one on Thursday, August 10th and one on Friday, August 11th.

September Johannes Michaelson Workshop to follow on the Monday after the demonstration, cost \$85, max 8.

November Trent Bosch

About Our Members by Phil Brown

Last spring, **Aaron Grebeldinger** completed 8 one-hour sessions with some of the kids at the Cesar Chavez Charter Middle School in NE, DC. He had three small lathes there for the kids to turn on and three kids came for all of his sessions. Besides turning skills aside, several kids benefited in other ways too. **Aaron** is pleased with the result.

Putting her interests in wood and biology to work in another way, **Jayne Hart** is coordinating a new course for the Osher Lifelong Learning Institute (OLLI) at George Mason University in Fairfax this fall. "The Biology and Beauty of Wood" will be an 8 week course with 1½ hour classes taught on Wednesdays from 11:30am - 1:00pm from September 20 - November 8. The course will begin with classes by a botanist, a forester, and a dendrochronologist (tree ring scientist) discussing various aspects of the biology, history, and culture of wood. For the remaining classes, **Jayne** has arranged for wood artists to discuss and demonstrate their use of the beauty and unique features of wood in the works they create. These artists specialize in wood sculpture, turning, basketry, musical instruments, furniture, and boxes. If you are interested in more information about this class, or perhaps becoming a member of OLLI, contact **Jayne** at: jlhart64@aol.com, or check out the website, <http://www.cel.sfsu.edu/olli/> for the Osher Lifelong Learning Institute, where you will find the fall class schedule posted beginning August 7th.

Al Melanson is assisting the Louverture Cleary School in Haiti, where his daughter teaches, with several projects. One involves setting up several small Jet lathes with tools and teaching the two-man maintenance staff to use them, so that they can teach some interested students. **Al** spent time at the AAW symposium talking with various companies, including Packard about getting the companies to donate equipment and supplies. For this project, **Al** would like your donation of gouges, skewers, scrapers, chucks, etc, which you no longer want.

Four CAW members continue teaching classes at WOODCRAFT in Springfield, VA.

Richard Allen has Introduction To The Lathe on Sundays August 13th, September 10, and October 8, 10am - 5pm.

Don Riggs conducts two sessions of Advanced Woodturning on Tuesdays from 6:00 - 8:30 pm on August 15 and 22nd, September 12 and 19, and again on October 10 and 17.

Aaron Grebeldinger will teach Bowl Turning on Thursdays August 10th, and September 14th or October 12th from 6:00pm - 9:30pm.

Introduction To Hollow Turning with **John Noffsinger** on Mondays, September 11 & 18, October 23 & 30, and November 20 & 27, 6:30pm - 9:30pm.

Ornamental Turning (holiday ornaments) with **Don Riggs** on Tuesday, September 26, 6:00pm - 9:30pm.

Bowl Turning with **Tom Boley** occurs Saturday, August 26, 10:00am - 5:00pm at the Leesburg WOODCRAFT store. On July 31st, **Tom** taught Turning an Ornament at the Kid's Camp.

Call the WOODCRAFT store at 703-912-6727 for details on any of these classes and to register, or see www.woodcraft.com/stores/store.aspx?id=327&nav=classes

For wood turning classes at the Bryant Center, check for the fall class schedule at: www.fcps.edu/DIS/OACE/classesetc.html

Don't be shy! Tell us about your woodturning activities in the CAW Newsletter. Best to send your information by the second weekend of the previous month to Phil Brown, 7807 Hamilton Spring Road, Bethesda, MD 20817-4547. Phone and fax (call first): 301-767-9863. E-mail: phillfbrown@comcast.net

Activity Information and Reminders

The Virginia Symposium will occur again this year and will be held the first weekend in November, at the Greenfield Education and Training Center in Daleville, VA. More information can be found at www.virginiawoodturners.org.

The 2006 Annual Fairfax 4-H Fair is scheduled for August 4-6, 2006. As in the past, this event will be held at the Frying Pan Park, Fairfax, Va. They anticipate that the 2006 event will be one of the best ever. They tell us that our participation in previous fairs was key to their success through the offering of demonstrations by the Capital Area Woodturners. According to previous reports, this activity is very appealing to families who attend the fair. Please contact Frank Stepanski (540) 720-4202 if you would like to volunteer to demonstrate.

Getting Galleries to Flog for You by Ed Karch (Newbee)

You won't start out at Del Mano but you don't have to be a big name turner to sell in a gallery. This newbee is in three and I will tell you how it is done. First you need to produce something of gallery quality. This doesn't mean perfect, but real good. If it has good form and finish with good figured wood, it will probably sell. If you get a couple or three compliments at show and tell (a tough audience), or favorable comments when posted on the WOW site or the woodcentral turning forum, you should be good to go.

There are two possibilities to start. One is a cooperative gallery where you will have to join the gallery, pay the gallery a consignment fee on sales, usually about 25%, and also be required to provide work such as manning the sale desk or doing accounting work. You will probably have to be juried into the gallery. Artisans United has such a gallery and as CAW members you are already members of the gallery as soon as you are juried in.

The other type of Gallery is the commercial art gallery. They may sell art, crafts, framing service, etc. Step one: check it out. If the walls are covered with 18th century horse pictures it is obviously not a fit. If there is wall art and other objects de art and especially maybe some wood pieces, it has possibilities. Step two: ask if they do consignment. If they do, make an appointment to talk to the owner or manager. If they don't do consignment, go down the street and go back to step one.

Make a presentation portfolio of your work and make up a business card. In the portfolio, have an introduction where you tell a bit about yourself and your art (Yes, art, artists sell in galleries.) Have some good pictures of a dozen or so pieces. Pack this in when you talk to the manager so they can get an idea of you as a business person. Yes, you need to be both an artist and a business person. If they don't bite on this bait, go down the street and back to step one. If they are hooked, offer to bring in a few pieces to try out.

Here is where you can talk about money. Find out what their consignment percent is. It will usually range from 30-50%. You base your price on what you want for the piece and they tack their percentage to that. If it is too high or too low it might not sell. If it sits around for a couple of months, you will need to pull it out and try something else. Support your gallery and send them some customers. The gallery price is your price. DO NOT undercut your gallery even for a friend. If they are that good a friend, give it to them but never undercut your gallery.

Newbee has tried this on five commercial galleries, two didn't do consignment. The other three are selling rounded wood objects produced in Newbee's studio, yes studio, after all, I am a rtest. If you go on a trip take your brag book and a few pieces. Newbee has done this on trips home from the symposium and placed his instant gallery pieces in galleries. Last year it worked in Emporia Kansas outside Kansas City and this year in Berea Kentucky on the way home.

What Else is Going On by Phil Brown

Exhibit Opportunities

1. Turned wood no bigger than 5" in any dimension is welcomed at *The 73rd Annual International Exhibition of Fine Art in Miniature*, November 19 - December 30, 2006, at Strathmore Mansion, North Bethesda, MD. This event is sponsored by The Miniature Painters, Sculptors, & Gravers Society of Washington, DC. Application fee \$20 with hand delivery, or \$30 for mailed submissions, due by September 9th. Get an application from Nancy Still, 301-977-2190, or nancy@miniartsupply.biz.
2. The prospectus is available for *Craft Forms 2006*, a national juried craft-art exhibit sponsored by the Wayne Art Center in Wayne, PA (on the main line west of Philadelphia). The juror this year is Gretchen Keyworth, Director and Chief Curator of the Fuller Craft Museum in Brockton, MA. With the exhibit open December 1, 2006 to January 24, 2007, applications are due by September 20, 2006. If you want exposure for your work and a good entry for your resume, do apply. Download the prospectus from www.wayneart.org/exhibits/pdf/CF06.pdf, or call them at 610-688-3553 to request a printed copy.
3. Watch for an application to the Open Exhibition 2006 from the Arts Council of Fairfax County. This annual multi-media visual art competition brings area artists together to exhibit at the Northern Virginia Community College, Annandale Campus.

Other Items

Most CAW members attending the banquet at the AAW Symposium in Louisville, KY, were sitting in the back of the room and could not hear Mary Lacer's acceptance speech as recipient of the Honorary Lifetime Membership Award. You will find it posted at: <http://www.woodturner.org/info/MaryLacer.htm>.

With over 12,000 members and 253 chapters, our "...American Association of Woodturners is the largest craft organization in the world". (Angelo Iafrate, President, AAW, 6-22-2006)

Call of the Lathe by Tom Boley

There is great joy in woodworking of all kinds. Handling the wood, shaping it to your needs, fashioning something out of it which other people actually recognize – these are all actions in woodworking which bring joy to the woodworker. We woodturners are just a subset of woodworkers so we have the same joys, we just get it done faster. For the few of us who do this for actual income, it is work, but work which we greatly enjoy for all the same reasons. When I go out to the shop in the morning, which, by the way involves a walk of about a hundred feet (better in the summer than in the winter!), I am absolutely joyous at the thought of getting back out to the wood, to do the things which we all can do, that is, turn it to shape and size to please ourselves as well as someone else. In my case, that "someone else" pays a lot of money for what I do so I must do it well. But the most critical eye on my work is my own, as I know is true for many of you, too. I was very concerned when I decided to "go pro" that this hobby which I have enjoyed so much would become drudgery and I would start to dread going out to work each day. That may still happen some day, but today was great. I expect tomorrow will be, too, and I can hardly wait until next week. I'm having a blast. By the way, I have talked about my income here from time to time. Remember that first week when I re-retired and started back into artistic turning full time and I reported to you that my first month's income was seven cents an hour? Well, I recently had two weeks in which it was somewhere around \$50/hour, a definite improvement. That kind of income turns the Call of the Lathe into a mighty loud holler!

Show and Tell for July by Don Kelley

This is a reminder that in order for your piece to appear in this section of the newsletter, at some point during the monthly meeting, you will need to bring your piece to Don so it can be photographed.



Andy Blackwell, 4 1/2 x 3 Cherry form with cocobolo collar

Gene Crosby, segmented star burst, walnut, paduak and canary maple, 11"



Eliot Feldman, cedar closet liner glue-up, 6 x 6 1/2



David Jacobowitz, spiral turning, poplar with ebony foot. 8" x 6"



Ed Karch, Blue Interstices of pecan 7" x 3 "



Mike Vore, 11" Cherry burl platter

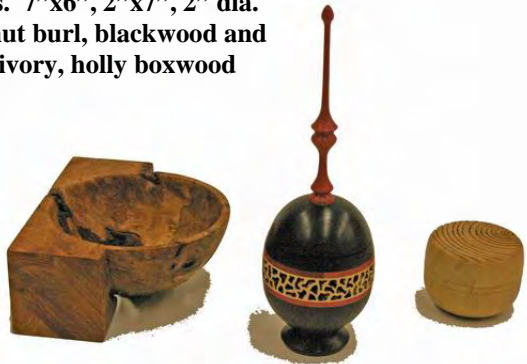


CA Savoy, hollow forms myrtle burl & silver maple burl 4X3 1/2, 7b 1/2 x 4 1/2 and 10 x 8"



Show & Tell along with Matt Birchfield demo

Dean Swagert, Half-round, boxes. 7"x6", 2"x7", 2" dia. Walnut burl, blackwood and pink ivory, holly boxwood



Matt's Demonstration



Richard Sherwood, Newsletter Editor
Capital Area Woodturners (CAW)
11907 Bracken Court
Bowie, MD 20720-4480

New CAW Members for July

Welcome! We are glad you have chosen to contribute your talents to our club. We look forward to the contributions you will make and the pieces you will bring in to Show-&-Tell. Your participation will add to our mutual love of woodturning and to our collective knowledge and skill. Membership in the CAW Chapter is open to anyone interested in the art and craft of woodturning.

First Name	Last Name	City	State
Robert	Berger	Great Falls	VA
Richard	Chilcot	Woodbridge	VA
Maria	Gerber	Clifton	VA
Kevin	Sherlock	Alexandria	VA
Dick	Pinto	Manassas	VA

