

The CAW Newsletter

The CAW Newsletter is the official publication of the Capital Area Woodturners Chapter of the AAW, and is published for the information of its members. Membership in the CAW Chapter is open to anyone interested in the art and craft of woodturning.

Meeting Announcement:

Date: Saturday, Feb 14, 2004

Time: 9:00 AM — 12:30 PM

Place: Bryant Education Center
2709 Popkins Lane
Alexandria, Virginia

*New Start
Time*

DIRECTIONS TO THE MEETING: From Virginia or Maryland, take I-495/I-95 towards the Wilson Bridge over the Potomac River. Take Exit 177A (Rt 1 South) on the Virginia side. Approximately 1.9 miles south of the Beltway, you will pass the Beacon Mall complex with Lowes Home Improvement Warehouse on your right. From the main entrance into Beacon Mall, go 4 more stop lights – about ½ mile. The 4th stop light will be Popkins Lane. Turn Left onto Popkins lane and go down 2 blocks. The Bryant Learning Center entry will be on your right. Drive to the East side of the building. Plenty of parking on the side or in the rear of the building. The entrances to the woodworking shop and meeting rooms are off the East side of the Bryant Center.

Program For The Month

8:30 AM Help set up for the demonstration. Look over the For Sale items in the equipment room. Help get the coffee bar going or have a cup of coffee and a donut with your fellow turners. Discuss the items on the Show & Tell table. Rent a video. Talk over problems and techniques with someone who might already have been there and done that.

9:00 AM A normal business meeting. Photos of member items will be taken for the November Newsletter. The tape library will be open. A silent auction table will be available for donated wood and items. A Show & Tell of pieces brought in will be conducted. Supplies & tools for sale will be shown.

09:30 AM Demonstration of Segmented turning by Dean Swagert. Dean will demonstrate the tips and techniques associated with segmented turning design; layout of the individual sections and pieces; cutting the segments; preparing them for joining; advantages and disadvantages of different gluing products and processes; ensuring proper alignment; applying pressure for joint strength; stacking the individual rings into a whole; and assembling a finished segmented piece. He will cover numerous tips that have worked for him in the past and hints about what to avoid.

Come join us for what promises to be a very informative and interesting demonstration !!!

Please Note the NEW Start Time The meeting start time has been **MOVED UP** by 30 minutes to give us more time for the demonstrations and presentations. Please give yourself plenty of time to come and get settled in!

A GREAT Valentine's Day gift - Get out of your wife's hair for the morning. Take her out later in the evening !!!

Future CAW Plans

2004

Feb -	Dean Swagert - Open Segmented turning
Mar -	Bruce Hoover, Sanding Tips and Hints
Apr -	CAW Symposium
May -	Al Stirt - Fluting / Carving - texturing
Jun -	Mike Hosaluk - Hollow forms, thinking out of the box
Jul -	TBD
Aug -	Picnic



There were approximately 105 members at our January meeting for Gerry Headley's pen demo - quite a crowd on a cold, windy day. Glad everyone could make it!

A sample from December 2003 of Dean's segmented hollow form with segment voids. He'll show you how it's done



2003
CAW Cash Flow Report

1/1/03 Through 12/31/03

Category Description

INCOME	
CAW Logo Clothes	3,433.50
Coffee Collection	32.00
Demonstration Fee	2,260.00
Gifts Received	75.00
Group Buy Collection	1,432.55
Membership:	
New	890.00
Renewal 2002	20.00
Renewal 2003	2,920.00
Renewal 2004	930.00
Renewal 2005	160.00
Renewal 2006	40.00
TOTAL Membership	4,960.00
Monthly Raffle	3,189.00
Silent Auction	541.00
Video Rental	1,346.00
Workshops	490.00
TOTAL INCOME	17,759.05

EXPENSES	
Annual Picnic	337.81
Artisans United	35.00
Bank Charge	5.00
Bryant Lathe Maintenance	1,258.00
CAW Logo Clothes Purchase	5,372.38
Club Meeting Equipment	220.00
Coffee & Donuts	267.31
Demo Lunch	827.00
Demonstrators	4,058.00
Group Buy Acct	1,438.36
Holiday Party	641.23
Newletter	838.52
Raffle Items	1,898.11
Supplies	236.42
Video Tape Purchase	1,050.41
Virginia Symposium	1,000.00
Web Site	208.72
Workshop Expense	635.00
TOTAL EXPENSES	20,353.27

Membership Renewals Are Now
OverDue!!

Renew your CAW membership for the year 2004.
\$20 for individual membership
\$15/person for multiple persons in a family

Bring your dues to the next meeting or mail them to:
Mike McInerney, CAW Treasurer
14526 Creek Branch Ct
Centreville, VA 20120

Make checks payable to [Capital Area Woodturners](#)

If you are unsure if you owe dues for the year 2004, look at the mailing label on the newsletter in the upper right corner. If it says DEC-03, you owe. If it says DEC-04, you are paid up. If you get the newsletter via email, check our website at the following link: <http://www.capwoodturners.org/dues.htm>, or call or email Mike McInerney, CAW Treasurer, at 703-378-8117.

NOVA WOODWORKING SHOW

The nationally popular Woodworking Show will be at the Dulles Expo. Center in Chantilly, Va. On:

March 19-21, 2004.

Show hours are:

Friday 12 Noon -- 7:00PM

Saturday 10:00AM -- 6:00PM

Sunday 10:00AM -- 4:00PM

The Capital Area Woodturners Club has again been invited to participate in the show. We will be allocated enough space to conduct woodturning demonstrations and to display some of our finished work. CA SAVOY, 703-765-7268 email cadjsavoy@cox.net, will coordinate all show activities for the CAW. Annually, this is a favorite activity for our members and we always pick up new members.

This is a great opportunity for us to promote, and provide information about our club; display our work; demonstrate the beauty and diversity of wood-turned pieces; and generate interest in our chosen craft. Attendance at these shows is generally 5,000 - 10,000 people over three days.

We plan to have three mini-lathes set up to be used by CAW members for the entire show. Those who feel comfortable turning in front of an audience are encouraged to sign up to demonstrate. All others are requested to sign up to staff the booth, answer questions, show off our displayed turnings, and promote our club and woodturning. **Please note:: If you are a demonstrator you must also be a member of AAW.**

Please wear your CAW shirts during your tour at the show. If you do not have a shirt Chris Cuyler will be selling CAW wear at the February and March meeting. This is not a mandate, but my request.

Demonstrators should do projects that take no more than about 30 minutes. If you take too much longer, you tend to lose your audience; also, no power sanding and keep hand sanding to a minimum.

A volunteer work schedule will be provided at the Feb. and March meetings. We plan to have enough participation to schedule three people demonstrating and two manning the booth on two or three hour shifts each day. Volunteers get free admission to the show. You should go to the Show Office at the entrance to the show and get your pass for the day you are assigned. Come in early and visit the show or stay after your tour and see the show.

And a reminder: "We are guests of the WW Show and are given these booths for our activities free of charge. Therefore, you are not permitted to sell your items nor display price tags on them at this show." If someone is interested in your work, give them one of your business cards and have them contact you later.

Also, for security purposes, until the show opens each morning, you must not be out of our booth and wandering around the floor. If this occurs, you may be asked by the Security or Show staff to leave the show

CAW-S/E WORKSHOP-BRYANT SCHOOL

WED. 2-11-04 9:00AM TILL 3:00PM

TUES. 2-24-04 9:00AM TILL 3:00PM

Any special requests contact::

CA SAVOY cadjsavoy@cox.net

Or:: Don Riggs driggs11@cox.net

Or:: Don Johnson drjppapaw@aol.com

PLEASE NOTE:: There is a shop charge of \$5.00. If you use any tool, i.e., band saw, lathe, drill press etc. charge will apply. If you come to visit and just watch, then - no charge.

YOU MUST ALSO BE A MEMBER OF THE AMERICAN ASSOCIATION OF WOODTURNERS IF YOU WANT TO USE ANY OF THE TOOLS.

CAW- ONEWAY ORDER

CA will be placing a ONEWAY order on Monday, Feb 16th. Order must be to him NLT Sunday 02-15-04.

Check your catalog or call up ONEWAY website at www.oneway.on.ca to see what 's available or e-mail your order to C.A. at cadjsavoy@cox.net

Items can be picked up at Bryant School on the 2nd Wed. or last Tues. monthly workshops or at the monthly meetings or by special arrangements. You pay when you receive your merchandise.

CA Savoy::: HAPPY AND SAFE TURNING!!!!!!!!!!!!

Lathe For Sale in Central Virginia

Nova 3000 Lathe for Sale Asking Price \$1500

1 1/2 HP variable speed motor. Swing over bed-16", Swing with head rotated-29". Lathe purchased in 1999; the warranty is in effect until October. All original equipment, which came with the lathe, is included as well as the following equipment. This lathe can be upgraded to a DVR.

- Outboard Tool Rest Assembly- purchase price new \$269.
- Handwheel - cost \$27.99
- Vacuum Adapter - cost \$74.95
- Two tapered adapters for Stronghold and other Oneway Equipment - new \$22.45 each
- A live center set with case - new \$49
- 1 4" Oneway Faceplate - new \$44.95
- #2 MT drill chuck - new \$30

This lathe comes with over \$500 of extra equipment. Shipping not an option, however we could work out meeting somewhere or possibly delivery, if you are unable to pick it up. Remlik Virginia (60 miles East of Richmond off route 17) It will be available for pick-up in the Middle of March. My new Oneway is due around the first of April.

If you would like to see the lathe or talk to me about it, call 804-758-2929 or e-mail me at dgill@oonl.com

Barbara Gill

CAW 2004 Officer Roster

<u>Name</u>	<u>Contact Information</u>
<u>Position</u> <u>Tom Boley</u> <u>President</u>	8316 Botsford Ct. Springfield, VA 22152 703-569-2548 tboley@erols.com
<u>Manny Fernandez</u> <u>Vice-President</u>	7913 Hollington Place Fairfax Station, VA, 22039 703-690-9550 mannyandsusan@cox.net
<u>Mike McInerney</u> <u>Treasurer</u>	14526 Creek Branch Court Centerville, VA 20120 703-378-8117 mikemc1421@aol.com
<u>Bob Reynolds</u> <u>Secretary</u>	7627 Mineral spring Court Springfield, VA 22153 703-455-2931 reynoldsrf@aol.com
<u>Frank Stepanski</u> <u>Committee Chair</u>	1203 Washington Dr. Stafford, VA 22554-1902 540-720-4202 woodturner@purespeed.com
<u>C. A. Savoy</u> <u>Show Director</u>	1309 Gatewood Drive Alexandria, VA 22307 703-765-7268 cadjsavoy@cox.net
<u>Jim Marstall</u> <u>Newsletter Editor</u>	6213 Capella Ave. Burke, VA 220215 703-644-6797 jim.b.marstall@boeing.com
<u>Club Support Volunteers</u>	<u>Gerry Headley</u> - Video Library <u>Aaron Grebeldinger</u> -Ed. Outreach <u>Cal Frantz</u> - Group Buy <u>Jonathan Hess</u> - Auctions <u>Chris Cuyler</u> - CAW Clothes All committee volunteers - Set-up, clean-up, education, etc.

**Capital Area Woodturners
2004 Activities Calendar**

Bryant School; 2710 Popkins Lane; Alexandria, VA

Month	Monthly Meeting	Skill Enhancement Workshops	
	Start 08:30 to ??	9:00 am to 3:00 pm	
	2 nd Saturday	2 nd Wednesday	4 th Tuesday
Jan	10	14	27
Feb	14	11	24
Mar **	13	10	30
Apr ***	10	14	27
May	8	12	25
June	12	9	29
Jul ****	10	14	27
Aug	14	11	31
Sep	11	8	28
Oct	9	13	26
Nov	13	10	30
Dec	No monthly mtg. Holiday social date and location TBD		

** Also, NOVA Woodworking Show on March 19, 20, & 21 2004
 *** CAW Mini-symposium at April 10th meeting date
 **** AAW Symposium in Orlando, FL on July 23, 24, & 25, 2004

About Our Members

by Phil Brown

Richard Allen taught a class at Woodcraft on February 1st. His next class, *Introduction to Woodturning*, will be Sunday March the 7th at Woodcraft. Call the store at 703-912-6727 to register. On a personal note, Richard has been out of his house since the beginning of November to late January while repairs from storm damage were being done.

On short notice last year, several members responded to a call for slides from Lark Books for a book, "500 Wood Bowls", which they are developing for publication in the late fall of 2004. The jurors were Ray Leier and Jan Peters, owners of del Mano Gallery in Los Angeles as well as Kevin Wallace, an independent curator and writer in the field of contemporary art, and present or former staff member at del Mano. So far I have learned that slides were accepted for publication from **Frank Stepanski**, **John Noffsinger**, **Neil Kagan**, and **Phil Brown**. The publisher is also preparing "400 Wood Boxes" in which **Neil Kagan** has one or more entries.

John Noffsinger discussed his turned vessel designs and texturing techniques at the Northern Virginia Carver's Association meeting on January 15th. John was a first place winner at the NVC show at Colvin Mill last September.

Aaron Grebeldinger's first bowl turning class (originally taught by **CA Savoy**) at the Woodcraft store in Springfield, Va. will be on Thursday February 12th, followed by a second class on March 11, 2004. Turn a bowl while learning wood selection, mounting techniques, finishing and the proper use of the side ground bowl gouge. Call the store at 703-912-6727 for details and to register.

Tell others about your woodturning activities in the CAW Newsletter. Send your information by the third week of the month to Phil Brown, 7807 Hamilton Spring Road, Bethesda, MD 20817-4547. Phone and fax: 301-767-9863. E-mail: philtbrown@greenbelt.com

Other Item

Introduction into the Tree will be presented by the Maryland Native Plant Society on Tuesday, February 24, 7:30 pm, at the White Oak Library, Large Meeting Room. This introductory discussion about tree concepts will be presented by Richard C. Murray, an arborist and MNPS member. Richard is a tradesman who for over 32 years has worked "hands-on" with trees. He will discuss how trees are constructed and how they function and survive. Richard will bring fresh tree samples for us to observe, handle, and discuss. We will learn more about how trees relate to other plants, organisms, and our environment. Directions: Exit the Washington Beltway at New Hampshire Ave (exit 28). Go north about 2 miles. The library is the first building on the right, once you have passed under Route 29, just after the Sears store.

Fairfax County Adult Education - Winter Wood Turning Class

The Intermediate Woodturning Course (Course # 2371) will be offered twice to start on Monday, March 15 and again to start on Wednesday, March 17 and will continue to meet the respective Monday or Wednesday for a total of 6 weeks. Both courses are taught in the wood shop at the Bryant Center (where CAW also meets) at 7:00 to 10:00 p.m. on each scheduled night. Three projects: a bowl, a lidded box, and a platter offer a series of challenges for both beginners and advanced students.

The Schedule is out, and one can register by phone--703-227-2377, Monday-Friday and can pay with a credit card. The intermediate course is \$110.00 tuition with a \$19.00 user fee. If you have any problem getting signed on for a course, call Ms. Elaine Hawes at 703-227-2261 and she can get you scheduled for the course you want. Taught by CAW member **Don Riggs**, the course description is as follows:

Call for Woodturning Demonstrators Smithsonian Renwick Gallery

Three dates, May 26, July 14 and July 21, from noon to 3 pm are available to reserve to demonstrate woodturning at the Renwick Gallery, 17th and Pennsylvania Avenue NW in Washington DC. The purpose is to show some furniture making techniques and processes to the public who come to see the exhibit *Right at Home: American Studio Furniture*. This exhibit will be open from April 2, 2004 through Jan. 17, 2005. Those of you doing between-centers work should take this opportunity. Turn some spindles, drawer pulls, finials, balls, or other furniture parts, or make an all-turned stool. Or turn some bowls too. Do what ever you like. A Jet lathe and wood bench will be set up for you. Bring your cutting tools and wood. All of us demonstrating at the Renwick in 2002 enjoyed doing it and visiting with those who sat down to watch.

Tell Phil Brown of your interest and ask questions you may have about demonstrating. Call him at 301-767-9863 or by email: philtbrown@greenbelt.com. See a list of objects to be displayed in the exhibition at: <http://www.chesapeakewoodturners.com/renwickshow.pdf>

Group Buy Program

The last time I put a column in the Newsletter I reported that we got a good deal on our order to Craft Supplies USA, saving about 17% on average compared to the catalog prices. That was the good news. The not so good news was the time delay in receiving a few back ordered items for a couple of members. The order was placed in March, but Bob Marshal didn't get his last back ordered items until the November meeting – an eight month wait. Thanks for being so patient, Bob.

Anchorseal continues to be popular. In the last three months we purchased a total of 20 gallons and distributed it to several members, at a \$8.50 per gallon. That beats the retail price by a heck of a lot. At the February meeting I will have four gallons not spoken for that will be available on a first come, first served basis. Bring a 1 gallon container to the meeting if you would like to go home with a supply of Anchorseal.

Finally, because I am moving out of the Washington area, we need a new group buy program coordinator. It's a lot of fun, you get to know a lot about the various suppliers who sell to wood turners around the country, and club members really appreciate the good deals you make available to them. If you would like to take over this important club activity please let me or any of the club officers know as soon as possible.

Cal Frantz

Notice/For Sale from Steve Bishop

Steve Bishop desperately needs to clear out all of his stock of wood. He has planks of cherry, walnut and figured maple, as well as some slabs of maple burl. He is willing to let all of this go for whatever you are willing to pay, or for free. He also has a Ryobi table saw, a woodworking work bench, and a grinder that he needs to get rid of under the same conditions. Please call (703) 365-7905 for directions.

(NB: Steve lives in Bristow VA outside Manassass)

Replenish Your CAW Wardrobe

Chris Cuyler asks that each member inventory their stock of logo items, t-shirts, sweat shirts and hats and be sure to see him at the meeting to replenish their supply. Remember - your kids will look fashionable in these items as well. A small number of turning smocks (about 14) will be available on a first-come first-served basis. These smocks have the club logo on them and can be personalized with your name for a nominal fee."

Temporary Help for the Video Library

I am looking for a volunteer to run the CAW Video Library at the Feb meeting. Neither I nor my usual assistants will be able to be there and I will need someone to set up, rent videos, and keep the remaining videos at home until I can pick them up for the March meeting. Of course, one of the benefits of running the library is getting to review as many of the videos as you want for free.

If you are interested, please let me know and I will come by to show you how the library is run and what you would need to do. It's easy !!! You can e-mail me or call me with any questions at (410) 286-5958.

Gerry Headley

April Symposium Topics Survey

Hi all,

Results from the Survey are listed below. We have 12 time slots to fill. I was thinking we could double up on a couple of the below topics, then maybe dedicate a CAW meeting to another, say Boxes...

Thoughts, volunteers for any of these events...

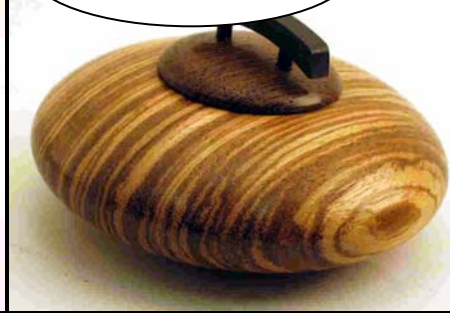
Happy turning... Frank

Votes Topic

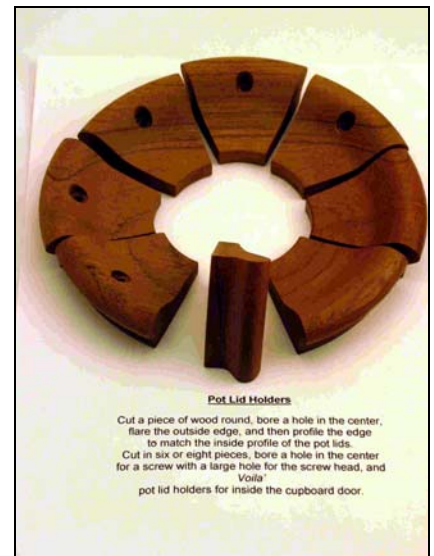
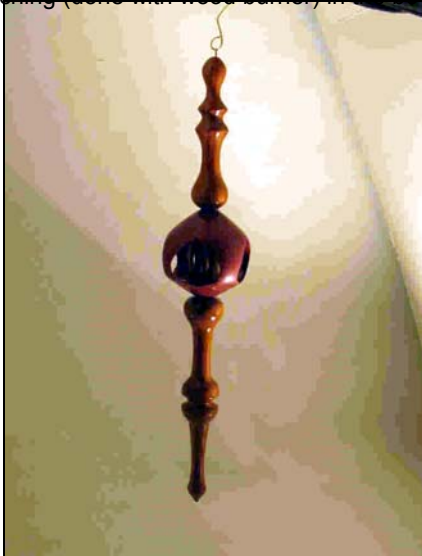
34	Wood selection and preparation for mounting to the lathe.
29	Hollow Turning
24	Boxes
23	Simple segmented turning
22	Favorite finishes, Oil, Epoxy, Lacquer, Wax, Beal Buffing,
19	Texturing on & off the lathe
19	Turning miniatures –
19	Thread Chasing
18	Nat Edge Bowl - Hands On
18	Marketing & Selling
16	Tool sharpening
15	Christmas Ornaments
12	why you cut where.
12	Light pulls and possibly one on wine stoppers, dusters and other craft type items.
11	Basic Bowl - Hands On
11	Turning platters.
3	Making Pens
1	Tool handles - from the drilling, to the turning, to the ferrule, to the gluing, etc.
1	Spindle Turning

This is an official 'Call for Demonstrators'.

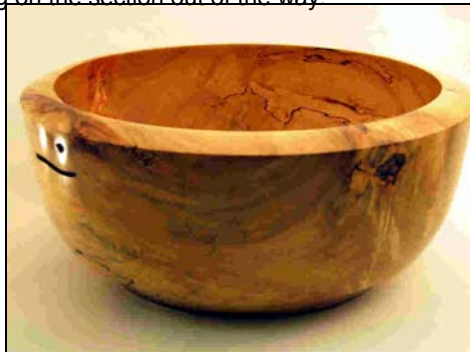
Anyone interested in presenting one of these demonstrations (or sharing in a demo), please contact Frank Stepanski to get on the list. This is a GREAT experience. Take advantage of it!



Left : Don Johnson – Carved 7”W X 4”H Myrtle bowl and a carved, textured, dyed Maple Box. Center Dean Swagert – a 5”W X 11/2”H Zebrawood hollow form with an ebonized Wenge top Right Joyce Beene – an Ambrosia Maple bowl with maple leaves etching (done with wood burner) in the bowl interior.



Left: Gene Milstead – a 22”L ornament with a finial inside a split-reverse turning inside another split-reverse turning Center: Patrick O’Brien - A 14”H X 14”W Spalted Ambrosia Maple hollow form. Right: Tom Boley - a turned item shaped to meet the contour of the pans used by in the kitchen by the Boleys. The ring is cut into sections and one of the pieces is screwed into the side of a cabinet door. The pot lids are hung on the section out of the way



Left Patrick O’Brien - a 12 1/2” H X 12 1/2” W Spalted Maple hollow form with the vessel cracks filled in using black InLace epoxy filler. Center: Don Hart - a large 14”W X 6”H Maple salad bowl. Right: Allen Becker - a 12”W X 4”H segmented hollow form made from Wenge, Maple and Paduak



Far Left: Craig Cochart - a display case full of pens and pencils.

Near Left: Don Riggs - A 12”W Oak bowl filled with spheres with multi-axis accent rings.



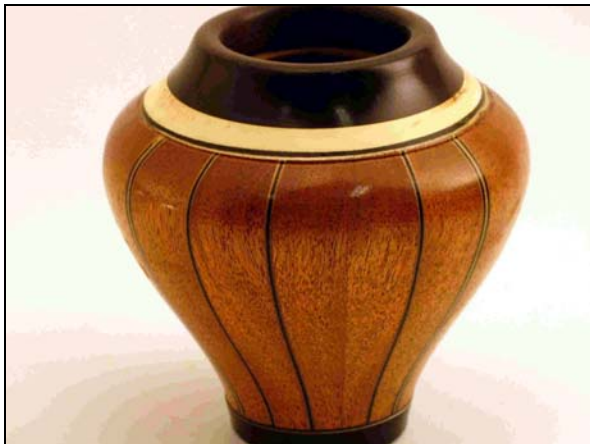
Left : Bill Fowkes - an 11"W X 1"H African Rosewood and Purple Heart vanity mirror. Center: Mike Kinney - a 11"W X 3"H maple Burl salad bowl Right Drew Mitchum - two 6"W X 3" H cherry bowls and a 6"W X 5"H Holly bowl



Left Tom Scharenbrock - a 10"W X 2"H Maple shallow bowl using Jimmy Clewes tips and techniques for using Trans Tint alcohol-based dyes to color the wide rim Center: Mike Kinney - A Maple burl bowl, a White Oak box & bowl, and an Ambrosia Maple burl bud vase. Right: Neil Kagan - a completed version of a project resulting from Michael Lee's class. A Cherry turned, carved and pierced item.

Right: The whole Show-n-Tell table had something to pique everyone's interest. What marvelous talent we have in our club!

Below David Jacobowitz - a 4"H X 3½"W segmented hollow form made from Mahogany, African Blackwood, and Holly



ARTISANS UNITED NEWS

By Dave Reel, dreel@cox.net

Technology Park showcase

CAW needs a volunteer to organize the Technology Park showcase exhibit. This is a large display case in an attractive office-building foyer provided through the Northern Virginia Council for the Arts. Many of you saw a picture of this at the December Christmas party. The display will be installed from mid July through mid October so everyone should get started thinking about turning a piece for the display. Items will be for sale.

AU Gallery Sales

Gallery sales tripled during December although for the year, sales were about 20% less than last year.

AU Gallery Show

Gallery Director, Elisabeth Stiles, would like to put a modest display of turned and carved wood in the gallery from July 1 through Sept 2. She would like around five pieces representative of each craft. We need a CAW member who would be willing to assist Elisabeth in obtaining these pieces from our membership and possibly coordinate with the person in the Northern Virginia Carvers who will be collecting carved pieces. No experience necessary. Contact Dave Reel. The pieces can be, but don't have to be, for sale.

NVHG Fair

The Northern Virginia Handcrafters Guild will hold it's annual craft fair April 24 & 25 at the Northern Virginia Campus of Northern Virginia Community College. They would welcome a woodturning demonstration and will provide CAW with a free booth and \$150 to cover costs. Anyone who would like to organize such a demonstration should contact Dave Reel.

Artisans Center of Virginia

Center assistant director, Elizabeth Moss, has requested AU's assistance in mounting a show of all Virginia crafts at the Waynesboro gallery from Sept 22 through Nov 3 2005. Though this seems a long time from now, there are 17 different groups who have to decide whether to participate & get organized. So, AU is asking for a coordinator from each interested guild who would collect pieces for display. We might not even have to deliver them to Waynesboro as Elizabeth may come up here to collect everything. She will select what to display from the contributions and take care of doing the installation. To have turned wood in the show, we need a CAW member to take on this role of assembling pieces from our members. The display space is a 10x20 foot room that constitutes the entrance foyer to the Waynesboro gallery. Call Dave Reel if you would like to do this. I have a copy of the exhibition guidelines and exhibition agreement.

An Note From the Great Northwest

The Greater Vancouver Woodturners Guild is pleased to announce the **West Coast Roundup**, an international woodturning symposium, September 10 - 12, 2004, in Vancouver, British Columbia.

This event will cater to all levels of turning enthusiasts. The presenters will be Richard Raffan, David Ellsworth, Lyle Jamieson, Jacques Vesery, Michael Werner, Vernon Leibrant, Joe Fleming and Martin Thorne. For registration and information, please contact Marco Berera (604 274 7594) or visit our web page at:

www.gvwg.ca/Symposium2004.htm.

Why not make this event part of a vacation to British Columbia's beautiful west coast. Spectacular scenery combined with all the pleasures of a modern multi-cultural city will make this truly a trip to remember.

We look forward to meeting you .

The Call of the Lathe

CAW President, Tom Boley

In January, I wrote of the Call of the Lathe as it pertains to us as woodturners. But how about others? Surely there are other people who would like to learn woodturning, even though they may not realize it now. We have all seen how demonstrating at the annual Woodworking Show at the Dulles Expo Center attracts an audience, many of whom visit a club meeting and then decide to join the fun. We have made a policy decision to support an outreach program to youth of the community. As we all know, it isn't cheap to be a woodturner. Even "free" wood may require purchase of a chain saw and travel to go get it. As adults, most of us have the financial means to support this hobby, but kids don't. While I hope that we will continue to reach out to other adults in the community through our demonstration at The Woodworking Show and other opportunities to showcase the craft, we should be alert to opportunities to demonstrate to the youth of the community what woodturning is all about and get some kids, and perhaps their parents, interested.

Aaron Grebeldinger is the chairman of our Youth Outreach committee and has already begun the process of finding and engaging youth groups in woodturning. He has done a trial demo to a Girl Scout leader and her children with a view toward a hands-on demo for the larger group at Bryant School. Jim Marstall has made inquiry of a 4-H club at Frying Pan Park in Virginia in anticipation of a woodturning demonstration in June. Others of you may know of a youth group which may be interested. I recommend that our primary target audience be teenagers, but somewhat younger may also be effective. This will introduce kids, and perhaps many parents, to something they had never seen before and could well spark an interest in someone who, in future years, will become a leader and innovator in the field of woodturning. We could start it here. Your personal interest and participation in our Youth Outreach efforts could provide a child with an outlet for creative energy channeled to a good outcome rather than trouble. Be on the lookout for youth outreach opportunities. Please coordinate your ideas through Aaron so we don't get stretched too thin.

Safety first. How often have you heard that? Pretty regularly, I bet. Well, we as woodturners always have the opportunity to get hurt, from a mistake with a chain saw to a piece flying off the lathe. With woodturning, our eyes and ears are probably the most vulnerable, but so are our lungs. Especially when acting as a mentor to a new turner or demonstrating the craft to a youth group, utilizing safety equipment is an important part of the work. I wear ear muffs whenever I crank up the chain saw, as well as a face shield. I also wear ear muffs sometimes in the shop when the turning I am doing seems to be unusually loud because of the nature of a particular piece of wood. Those high-pitched noises can

be harmful to hearing. Face protection is important when turning as a piece may separate from the larger piece on the lathe and make quite a missile ricocheting around the shop. Ask me how I know! Dust is our constant companion, too, and some of that dust may be particularly dangerous, such as cocobolo, walnut, and any spalted wood dust. I wear one of those two-canister dust masks whenever I am power sanding anything. Let's be safe and let's demonstrate safety to the new folks. It's a good habit to start right off the bat.

As a final note, please remember to make your suggestions to your Board members at the meetings. Your primary contacts for suggestions should be to Manny Fernandez, VP, Bob Reynolds, Secretary, or to me. Whatever you suggest will be discussed at the next Board meeting. I keep a pad of paper in the shop to write down thoughts for CAW when they come to me. With the Call of the Lathe ringing in your ear, you may well think of something which will really help the club. Be safe, Everyone. See you at the meeting.

Tom Boley

Jim Marstall, Newsletter Editor
Capital Area Woodturners (CAW)
6213 Capella Ave.
Burke, VA 22015

CAW Newsletter – February 2004

New CAW Member for Jan 2004

Welcome! We are glad you have chosen to add your talents to our club. We look forward to the contributions you will make and the pieces you will bring in to Show-&-Tell. Your participation will add to our mutual love of woodturning and to our collective knowledge and skill.

<u>First Name</u>	<u>Last Name</u>	<u>City</u>	<u>ST</u>
Robert	Anderson	Fairfax Station	VA
Lauren	Bowers	Springfield	VA
Charles	Burton	Alexandria	VA
John	Cherbina	McLean	VA
Stewart	Crick	Manassass	VA
John	DiGravio	Alexandria,	VA
Fred	Feaster	Arlington	VA
Jeff	Fox	Alexandria	VA
Barry	Milstead	Hyattsville	MD
Mark	Robinson	Gainesville	VA
Frank	Romance	McLean	VA
Peg	Schaefer	Arlington	VA

