

The CAW Newsletter is the official publication of the Capital Area Woodturners, Inc., a chapter of the AAW, and is published for the information of its members.

CAW Newsletter

<http://www.capwoodturners.org>

JAN 2006

SPECIAL POINTS OF INTEREST:

- THIS MONTH'S PROGRAM- PAGE 2
- FRANK'S MESSAGE
- CAW SYMPOSIUM DEMONSTRATORS NEEDED

INSIDE THIS ISSUE:

- Skill Enhancement 2
- Workshop Information 3
- Call of the Lathe 4
- About Our Members 5
- Group Burl Purchase 6
- Share Your Knowledge 6
- Christmas Photos 7

Researchers Find No Pulmonary Effects From Wood Dust Exposure

Tulane, MS – A six-year study of 1,164 workers employed in wood products manufacturing found no pulmonary effects related to wood dust exposure.

This \$1.9 million study conducted by the Tulane University Medical Center on behalf of 10 trade associations examined the nonmalignant respiratory effects of wood dust. The longitudinal study involved workers at 10 wood products facilities. It "was designed to investigate the possible correlations between annual change in worker pulmonary health and concurrent airborne exposures in the industrial wood-processing workplace."

The 39-page final report summarizes the results of the study, including comparing and contrasting results at the diverse plants, which included sawmill, plywood, furniture, kitchen cabinet and millwork facilities. The report also includes researchers' recommendations for follow-up research studies.

"Researchers Find No Pulmonary Effects From Wood Dust Exposure," *CWB Custom Woodworking Business*, November 2005, p. 14. Thanks to PETE HADLEY for sending this in for us to consider.

(More to follow next month with different information)

Meeting Information

Meeting

Announcement:

Date: Saturday, January 14th, 2006

Time: 9:00 AM – 12:30 PM

Place: Bryant Adult Education Ctr. 2709 Popkins Lane, Alexandria, VA

From Virginia or Maryland, take I-495/I-95 towards the Wilson Bridge over the Potomac River.

Take Exit 177A (Rt. 1 South) on the Virginia side. Approximately 1.9 miles south of the Beltway, you will pass the Beacon Mall complex with Lowes Home Improvement Warehouse on your right. Drive past the main entrance into Beacon Mall, go 4 more stop lights – about ½ mile.

The 4th stop light will be Popkins Lane. Turn Left onto Popkins Lane and go 2 blocks. Bryant Learning Center entry will be on your right. Drive to the East side of the building. Plenty of parking on the side or in the rear of the building.

The entrances to the woodworking shop and meeting rooms are off the back corner of the east side of the Bryant Center.

DIRECTIONS TO THE MEETING:

Frank's Message

Happy New Year fellow Woodturners! First off, I would like to thank each & every one for your vote of confidence in my ability to fulfill the position as CAW President. I'm fortunate to have a core group of members to draw upon for knowledge, wisdom & the occasional kick in the head when I fall out of line. Praises on high to Tom Boley & Manny Fernandez for the exceptional efforts they performed throughout their tenure as President & Mr. Vice. Accolades to Bob Holtje for filling the crucial slot of Mr. Vice and welcome Bob Pezold back to the board. I have been honored to serve our club as Program Director, and am confident Bob will have a docket of talent which will educate, amaze and entertain us all.

I joined CAW to enhance my woodturning skills. Though far from an expert today, thanks to many CAW members I can turn a bowl! We have a broad range of talent within our club. I encourage you all to share your skills at our annual CAW Symposium this March, please see Mr. Bob Pezold to express your interest. The 2006 woodturning season is upon us, let's all go forth & create shavings.

Happy Turning.. Frank

CAW Symposium - Share Your Skills

During the March 11th meeting CAW will conduct our third annual CAW Mini-Symposium. One of the benefits within CAW is our vast knowledge base. We have woodturners of various skill levels who have skills, techniques, tidbits of information others could benefit from. The CAW Symposium is a fantastic opportunity to pass these things on before you pass on. This is a call/request/opportunity for you to share your skills. Demonstration timeslots will be 90 minutes. Impress your friends, impress your fellow members, impress yourself. If you are interested please contact any board member. Slots will be assigned first-come/first-served. HURRY!

Monthly Program Details for January 14th 2006

- 8:30 AM** Help set up for the demonstration. Look over the For Sale items in the equipment room. Help get the coffee bar going or have a cup of coffee and a donut with your fellow turners. Discuss the items in the Show & Tell table. Rent a video. Talk tips and techniques with others.
- 9:00 AM** Show & Tell
- 9:30 AM** A normal business meeting. A raffle will be offered. Photos of member items will be taken for the next CAW Newsletter. The tape library will be open. A silent auction table will be available for donated wood and items
- 10:00 AM** Don Riggs will be providing this demonstration and will show techniques for turning goblets and spheres. You know Don's skills and his sense of humor so it will be a good opportunity to learn, be entertained and enjoy.

SKILL ENHANCEMENT WORKSHOP

At Bryant School
WED. 01/11/06
9:00AM - 3:00PM
TUESDAY 01/31/06
9:00AM - 3:00PM
 Any special requests contact:

CA Savoy at
cadisavov@cox.net
 Or: Don Riggs at
driggs11@cox.net
 Or: Don Johnson at
drjpapaw@aol.com
 Or: Aaron Grebeldinger at
erph@erols.com

PLEASE NOTE::: There is a shop charge of \$5.00. If you use any tool, i.e., band saw, lathe, drill press etc. the charge will apply. If you come to visit and just watch, then - no charge.

YOU MUST ALSO BE A MEMBER OF THE AMERICAN ASSOCIATION OF WOODTURNERS IF YOU WANT TO USE ANY OF THE TOOLS

CAW 2006 Officer Roster**Position, Name****Contact Information****President, Frank Stepanski**

228 Aquia Bay Ave
Stafford, VA 22554-5327
540-720-4202

woodturner@purespeed.com

Vice-President,**Bob Holtje**

2708 Willow Drive
Vienna, VA, 22181
22039

703-281-1820

bob@holtje.com

Treasurer, Patrick O'Brien

200 N. Pickett St. #1108
Alexandria, VA 22304-2118
Tel. - days 703-519-5908
n. & wknds 703-751-0109

ohbewood@comcast.net

Secretary, Bob Reynolds

7627 Mineral Spring Court
Springfield, VA 22153
703-455-2931

reynoldsrf@aol.com

Program Director,**Bob Pezold**

8422 Mt. Zephyr Drive
Alexandria, VA 22309
703-799-1034

Operations Director**C. A. Savoy**

1309 Gatewood Drive
Alexandria, VA 22307
703-765-7268

cadjsavoy@cox.net

Newsletter Editor,**Richard Sherwood**

11907 Bracken Court
Bowie, MD 20720
301-805-1020

rcsher1@comcast.net

Club Support Volunteers**Don Kelley**

- Show and Tell Photos

Bill Bearden

- Video Library

Aaron Grebeldinger

- Education Outreach

George Salinas

- Group Buy

Jonathan Hess

- Raffles/Auctions

Vacant

- CAW Clothes

Annie Simpson

- Mentor Program

All committee**volunteers**

- Set-up, clean-up, coffee bar, etc.

If your address, phone, or email changes, notify Patrick O'Brien. This is essential in insure you receive the newsletter and other items that come to members.

ONEWAY ORDER

CA will be placing a ONEWAY order on Monday 01/16/06. Your order must be to him NLT Sunday 01/15/06.

Check your catalog or call up the ONEWAY website at www.oneway.on.ca to see what's available and email your order to CA at cadjsavoy@cox.net

CA places orders throughout the month, so if you need a ONEWAY product, email him by the Sat. preceding the monthly meeting and he will have your order for you at the meeting.

If you need something any other time during the month, send him an email and he will order and have it to you within a week. Also check the ONEWAY website for the new turning tools .

Items can be picked up at Bryant School on the 2nd. Wed. or last Tues. monthly workshops or at the monthly meetings or by special arrangements or can be shipped to you. You pay when you receive your order.

CA Savoy::: HAPPY AND SAFE TURNING!!!!!!

2006 Plans

Feb 11 Aaron Grebeldinger-Kelton Bowl Saver Demo
Mar 11 CAW Symposium
Apr 08 Don Derry - Coloring hollow forms
May 13 Michael Mocho - Texturing Hollow forms
Jun 10 CAW Annual Picnic
Jul 08
Aug 12
Sept 09 Johannes Michaelson - Turning full-size hats
Oct 14
Nov 11
Dec 09 Annual Woodturners Ball

**Information on Future Workshops by Bob Pezold**

Workshops are conducted by professional woodturners. We have been fortunate with coordinating workshops in conjunction with all our visiting demonstrators. Additionally on occasion we have professional turners who are in our local area and will offer a one-day workshop.

Workshops are conducted at the Bryant Learning Center, normal times are 08:30 – 3:30 lunch usually goes around 11:30. Fees charged for the workshops vary and will be announced with the workshop information. We conduct workshops on days the Bryant workshop is available.

Workshop signups. Class size is usually based on the complexity of the workshop. The more complex topics have a lower number of workshop attendees. I will place your name on the workshop list the day I receive payment. I will hold your payment until the day of the workshop. Once the workshop is filled a standby list is started. If you're paying by check please make out one check per workshop, make checks payable to CAW. If you cannot attend a workshop you have paid for, please send me notification so a standby can be selected and notified to fill your position.

Live Center Tips from Dave Barber

When turning very small items between centers, I used to find that my live center sometimes penetrated too far into the end grain of the timber. I found that if you insert a very small flat washer (4/40 UNC or the like) over the end of the center it will only allow a minimum penetration, will still center and the washer applies ample pressure on the end of the timber.

Still on the subject of live centers. I found, on occasions, that I wanted to apply pressure to a work piece, say the base of a bowl when the inside is finished and it is mounted in a jamb chuck, without marking the timber. I put a plastic or neoprene cup, of the type used on tubular steel furniture legs to protect your floors, over the point of the center. If you use a white or light colored cup it will allow sufficient pressure and will not mark the surface in any way.

Call of the Lathe by Tom Boley

When I wrote this column in mid-November for the December newsletter, I said that I could start to see a glimmer at the end of the tunnel in my process of creating a suitable facility into which I would move the equipment which I was buying from Don Maloney in order to take over his business and transition from the artistic to the architectural. That glimmer is now a bright light as we have made the move and I am up and running!!! It has been a struggle. There was much to do and generally only me to do it, although I have gotten help from several friends and from my son at key stages of the process. I am happy to report that I am now productive and actually turning out a product for my customers. Production turning is a different kind of work for me. I have been a field special agent or a supervisor for NCIS for the past 27 years and now I am working alone in a production shop with a LOT of work to do. Quite honestly, it feels good. I have met most of my customers who were passed on to me by Don and I will tell you that they are clearly some mighty fine folks who care both that I am providing them a quality product and that what they do for their own customers reflects their own dedication to excellence. I think that what I am doing should be a win-win situation for me, my customers, and their customers. As this new job continues to evolve, I will keep you posted. In ten years, I will be looking for someone to take over the business from me, you know. In the meantime, I think I hear the lathe calling...

Tom Boley

2005 Christmas Party



Group Buy by Bob Holtje

We will have Anchorseal, already in jugs so no need to bring one. Also available will be the Triton air hood. They sell for \$182. We have received good reviews from some of those who have already bought theirs. There will be an order form being completed for anyone who wishes to purchase more sandpaper, be sure you locate it during the meeting.

About Our Members by Phil Brown

Continuing his monthly submissions to juried exhibits at The Art League gallery in Alexandria, **John Noffsinger** won an "Equal Award" for a turned and textured piece on December 11th.

Four CAW members continue teaching at WOODCRAFT in Springfield, VA.

- * **Richard Allen** has Introduction To The Lathe on Sundays January 8th and February 5th, 10am - 5pm.
- * Advanced Woodturning with **Don Riggs** occurs Tuesdays, January 10, 17, 24 & 31st from 6 to 9:30 p.m.
- * Introduction To Hollow Turning with **John Noffsinger** is Mondays, January 23 & 30th, 6:30pm - 9:30pm.
- * **Aaron Grebeldinger** will teach Bowl Turning on Thursdays, February 9 and March 9, 6pm - 9:30pm.

Call the WOODCRAFT store at 703-912-6727 for details on any of these classes and to register, or see www.woodcraft.com/stores/store.aspx?id=327&nav=classes

Fairfax County is offering three woodturning classes at the Bryant Center taught by CAW members. **Drew Mitchum** teaches five sessions of Woodturning 1 starting Wednesday January 18th at 7 pm. **Aaron Grebeldinger** starts Woodturning 2 on Monday February 27th at 7pm. And **Aaron** begins five sessions of Woodturning 3 on Wednesday March 8th at 7pm. For more information look for Art Education - Fine Crafts at: www.fcps.edu/DIS/OACE/classesetc.html.

Don't be shy! Tell us about your woodturning activities in the CAW Newsletter. Send your information by the second weekend of the previous month to Phil Brown, 7807 Hamilton Spring Road, Bethesda, MD 20817-4547. Phone and fax (call first): 301-767-9863. E-mail: phillfbrown@comcast.net. (new email)

Exhibit Opportunity

1. For show dates and application for the Sugarloaf Craft Festivals in VA, MD, and other States in 2006, go to: www.SugarloafCrafts.com. For one new exhibitor certificate, worth \$100, contact Phil Brown.
2. "*Step Up to the Plate*" is the theme for the next AAW juried and invitational exhibit, which will premiere at the 20th Annual AAW Symposium in Louisville, Kentucky, in June 2006. AAW members are invited to become a part of this exhibition with pieces that reflect: commitment, America's favorite pas-time, or other work this title inspires. The show will open on June 21 in conjunction with the symposium and will run through September 4 at the Louisville Slugger Museum. Afterwards, the exhibition will be on display at other venues.

An application form is on the AAW web site, www.woodturner.org/sym/sym2006/exhibition. A completed digital application form with CD digital images (preferred format), and \$25 nonrefundable jury fee must be postmarked by February 15, 2006. A paper application is acceptable, but images need to be digital.

Share Your Knowledge With The Club Members

If you have come across a website, article or piece of information, let your newsletter editor know for inclusion in future editions of the newsletter. These can be on any subject of interest to the members, including good sites for the purchase of wood, tools and how-to instructions.

Australian Burl Purchase by Alan Becker

The CAW purchase of Australian burls is now in route from Oz. Due to the vagaries of shipping and cargo transport at this time of year, I can only estimate that the wood should arrive late Dec/early Jan.

Attached is an inventory of the purchased items and approximate pricing. Exact pricing will be adjusted once all of the freight and transport costs are known. I expect the burls should not vary by more than 10 cents per lb and the blanks are within \$0.50 of the final pricing. If you have purchased burls recently you will note that these prices are well below advertised prices of the regular vendors.

We will be receiving approx 300 pieces of turning stock, bowls, blanks and a few other assorted items. As we have done in the past, I will need a list of all members who are interested in purchasing some of these pieces. We will then conduct a random drawing of names and establish a priority list. People who are chosen at the top of the list will get first choice of the wood and we will continue down the list until all of the stock is taken. Depending on the number of people that want to participate, we may have to limit the dollar amount/ number of pieces available per person so as to ensure the widest distribution for this shipment.

Please email me at alan-becker@comcast.net to indicate your interest in participating in this program. We will announce the time and place for selection and pick-up as soon as the delivery of the goods can be confirmed.

Qty	Whole Burls	Weight (kg)	Weight (lb)	\$/lb	Qty	Whole Burls	Weight (kg)	Weight (lb)	\$/lb
122	Red Mallee	433.46	953.612	2.31	122	Red Mallee	433.46	953.612	2.31
27	Yellow Box	62.67	137.874	2.06	27	Yellow Box	62.67	137.874	2.06
8	Brown Mallee	25.57	56.254	2.31	8	Brown Mallee	25.57	56.254	2.31
6	coolibah	24.97	54.934	2.31	6	coolibah	24.97	54.934	2.31

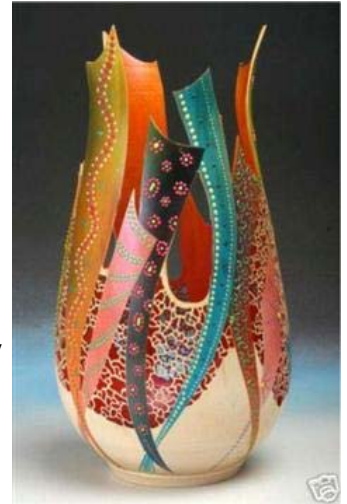
No.	bowl blanks	size	Price
4	Flame Myrtle	8x3	\$21.38
1	Sheoak	11x4	\$63.06
1	Sheoak	12x4	\$76.95
7	Sassafras	6x3	\$14.96
5	Sassafras	8x3	\$26.72
1	Sassafras	8x4	\$34.20
1	Blackwood	9x5	\$63.06
1	Silky Oak	8x3	\$21.38
1	Silky Oak	10x3	\$29.93
6	Jarraah Burl	6x4	\$18.17
6	Jarraah Burl	7x3	\$24.58
5	Jarraah Burl	8x3	\$32.06
1	Jarraah Burl	9x3	\$39.54
3	Jarraah Burl	10x3	\$50.23
2	Jarraah Burl	11x3	\$58.78
1	Jarraah Burl	8x4	\$43.82
1	Jarraah Burl	9x4	\$52.37
1	Jarraah Burl	11x4	\$76.95
1	Coolibah Burl	6x3	\$18.17
1	Coolibah Burl	7x3	\$24.58
2	Coolibah Burl	8x3	\$32.06
4	Coolibah Burl	9x3	\$39.54
1	Coolibah Burl	10x3	\$50.23
1	Coolibah Burl	12x3	\$70.54
3	Coolibah Burl	7x4	\$33.13
2	Coolibah Burl	9x4	\$52.37
1	Coolibah Burl	10x4	\$61.99

No.	bowl blanks	size	Price
1	Coolibah Burl	12x4	\$94.05
1	Coolibah Burl	11x6	\$117.57
8	White Top Burl	6x3	\$18.17
1	White Top Burl	7x3	\$24.58
5	White Top Burl	8x3	\$32.06
3	White Top Burl	10x3	\$50.23
2	White Top Burl	12x3	\$70.54
1	Yellow Box Burl	6x4	\$23.51
1	Yellow Box Burl	8x4	\$43.82
1	Yellow Box Burl	9x4	\$52.37
1	Yellow Box Burl	11x4	\$76.95
8	Red Gum Burl	6x3	\$18.17
2	Red Gum Burl	7x3	\$24.58
2	Red Gum Burl	9x3	\$39.54
1	Red Gum Burl	10x3	\$50.23
2	Red Gum Burl	6x4	\$23.51
1	Red Gum Burl	8x4	\$43.82
3	Red Gum Burl	10x4	\$61.99
2	Red Gum Burl	12x4	\$94.05
2	Red Mallee Burl	7x3	\$27.79
1	Red Mallee Burl	8x3	\$37.41
1	Red Mallee Burl	9x3	\$44.89
1	Red Mallee Burl	9x4	\$59.85

AAW Relief Fund Auction Results

You may recall that the American Association of Woodturners has created the AAW Emergency Relief Fund to aid AAW members and chapters affected by disasters. With 39 contributors from around the world, the recent auction began December 5th. The auction raised \$54,439.20. Individual AAW members and chapters had previously donated over \$8,000 in cash which will be added to the auction proceeds to aid the victims.

The piece that brought the most (\$6,601.00) in the auction was "The Spirit of New Orleans" donated by Frank Sudol from Canada. The AAW would like to thank all the artists who so graciously donated their time and energy to this effort. The AAW would also like to thank the generosity exhibited by the auction winners. Also thanks to John Hill (AAW Board member) and Binh Pho (artist) for their tireless energy in helping coordinate this entire effort, and to Fred Wilson (AAW member and donating artist) who also setup the entire auction on Ebay!



2005 Christmas Party by Richard Allen



▲ Christmas Ornament Winners →

▼ Grab Bag Winners →



CAW Holiday Party

Richard Sherwood, Newsletter Editor
Capital Area Woodturners (CAW)
11907 Bracken Court
Bowie, MD 20720-4480

New CAW Members for December

Welcome! We are glad you have chosen to contribute your talents to our club. We look forward to the contributions you will make and the pieces you will bring in to Show-&-Tell. Your participation will add to our mutual love of woodturning and to our collective knowledge and skill. Membership in the CAW Chapter is open to anyone interested in the art and craft of woodturning.

First Name	Last Name	City	State
Daniel	Cunningham	Alexandria	VA
Susana	Almuina	Arlington	VA

