

The CAW Newsletter is the official publication of the Capital Area Woodturners, Inc., a chapter of the AAW, and is published for the information of its members.

# CAW Newsletter

<http://www.capwoodturners.org>

JULY 2005

SPECIAL POINTS OF INTEREST:

- Dick Sing
- Woodturning at Potomac Overlook Park
- CAW Responds to Oregon Turner
- More Wood, Maybe!

INSIDE THIS ISSUE:

- Demonstrator of the Month 2
- Monthly Program Details 2
- CAW Symposium Dinner 3
- Call of the Lathe 4
- Bulk Purchase Info 6
- Newbie Notes 7
- Show And Tell for June 8

## Program of the Month— Dick Sing

Dick is our demonstrator this month. He will provide us some interesting insight into turning smaller objects from his style which no doubt will be interesting and enjoyable. Dick has retired after 31 years from the GM Plant in Illinois when it closed in 1989. He served an apprenticeship in tool & die and finished his service in quality control. When Dick retired in 1989, his avocation became his vocation when he became a professional woodturner. He bought his first lathe in 1965, but it was not until 1986, after he started attending symposiums that his turning took off. Dick combines his dexterity and skill required by his former work in tool and die and quality control with the eye of an artist, capable of new design and variations upon seeing something that sparks his imagination. He has written nine books on woodturning. He has written articles for Wood Magazine, The American Woodturner, has been included in The Art of the Woodlathe by Patrick Spellman and also in Beneath the Bark, Twenty-Five Years of Woodturning by Kip W. Christensen and Dale Nish. He has also been a demonstrator many times for the Utah Woodturning Symposium held at BYU in Provo, Utah, the American Association of Woodturning and numerous other Symposiums. Dick is also the featured turner on the new DVD Magazine Woodworking at Home. He travels often, doing demonstrations for businesses and clubs along with teaching classes and one on one instruction. He has also been known to sell his work at Art shows and in Galleries. His travels have taken him across the United States as far as Alaska and also to Australia, England and Norway. What a way to turn. *Continued on page 2*

## Meeting Information

**Meeting Announcement:**  
**Date: Saturday, July 9th, 2005**  
**Time: 9:00AM - 3:30PM**  
**Place: Bryant Adult Education Ctr. 2709 Popkins Lane, Alexandria, VA**

**DIRECTIONS TO THE MEETING**  
 From Virginia or Maryland,

take I-495/I-95 towards the Wilson Bridge over the Potomac River.

Take Exit 177A (Rt. 1 South) on the Virginia side. Approximately 1.9 miles south of the Beltway, you will pass the Beacon Mall complex with Lowes Home Improvement Warehouse on your right. Drive past the main entrance into Beacon Mall, go 4 more stop lights – about ½ mile.

The 4th stop light will be Pop-

kins Lane. Turn Left onto Popkins Lane and go 2 blocks. Bryant Learning Center entry will be on your right. Drive to the East side of the building. Plenty of parking on the side or in the rear of the building.

The entrances to the wood-working shop and meeting rooms are off the back corner of the east side of the Bryant Center.

## Demonstrator of the Month - Dick Sing

*continued from page 1*

Here are some examples of Dick's works and maybe what we will see him turn for us. They illustrate a variety of turning styles and objects.



### Monthly Program Details for July 2005 - \$5.00 Demo Fee

- 8:30 AM** Help set up for the demonstration. Look over the For Sale items in the equipment room. Help get the coffee bar going or have a cup of coffee and a donut with your fellow turners. Discuss the items on the Show & Tell table. Rent a video. Talk tips and techniques with others.
- 9:00 AM** A normal business meeting. A raffle will be offered. Photos of member items will be taken for the next CAW Newsletter. The tape library will be open. A silent auction table will be available for donated wood and items.
- 9:30 AM** Show & Tell
- 10:00 AM** Dick will spend time showing his various turned objects, with an emphasis on smaller objects but he will also illustrate what he finds important in turning many of the same objects we all turn, platters, bowls and vases.

### SKILL ENHANCEMENT WORKSHOP

**At Bryant School**  
**WED. 7/6/05**  
**9:00AM - 3:00PM**  
**TUESDAY 7/26/05**  
**9:00AM - 3:00PM**  
 Any special requests contact:

CA Savoy at  
[cadjsavoy@cox.net](mailto:cadjsavoy@cox.net)  
 Or: Don Riggs at  
[driggs11@cox.net](mailto:driggs11@cox.net)  
 Or: Don Johnson at  
[drjapaw@aol.com](mailto:drjapaw@aol.com)  
 Or: Aaron Grebeldinger at  
[erph@erols.com](mailto:erph@erols.com)

PLEASE NOTE::: There is a shop charge of \$5.00. If you use any tool, i.e., band saw, lathe, drill press etc. the charge will apply. If you come to visit and just watch, then - no charge.

***YOU MUST ALSO BE A MEMBER OF THE AMERICAN ASSOCIATION OF WOODTURNERS IF YOU WANT TO USE ANY OF THE TOOLS***

**CAW 2005 Officer Roster****Position, Name****Contact Information****President, Tom Boley**

8316 Botsford Ct.  
Springfield, VA 22152  
703-569-2548  
[tboley@erols.com](mailto:tboley@erols.com)

**Vice-President,****Manny Fernandez**

7913 Hollington Place  
Fairfax Station, VA,  
22039  
703-690-9550

[mannyandsusan@cox.net](mailto:mannyandsusan@cox.net)

**Treasurer, Patrick O'Brien**

200 N. Pickett St. #1108  
Alexandria, VA 22304-2118  
Tel. - days 703-519-5908  
n. & wknds 703-751-0109

[ohbewood@comcast.net](mailto:ohbewood@comcast.net)

**Secretary, Bob Reynolds**

7627 Mineral spring Court  
Springfield, VA 22153  
703-455-2931

[reynoldsrf@aol.com](mailto:reynoldsrf@aol.com)

**Program Director,****Frank Stepanski**

1203 Washington Dr.  
Stafford, VA 22554-1902  
540-720-4202

[woodturner@purespeed.com](mailto:woodturner@purespeed.com)

**Operations Director****C. A. Savoy**

1309 Gatewood Drive  
Alexandria, VA 22307  
703-765-7268

[cadsavoy@cox.net](mailto:cadsavoy@cox.net)

**Newsletter Editor,****Richard Sherwood**

11907 Bracken Court  
Bowie, MD 20720  
301-805-1020

[rcsher1@comcast.net](mailto:rcsher1@comcast.net)

**Club Support Volunteers****Don Kelley**

- Show and Tell Photos

**Bill Bearden**

- Video Library

**Aaron Grebeldinger**

- Education Outreach

**Bob Holtje**

- Group Buy

**Jonathan Hess**

- Raffles/Auctions

**Bob Pezold**

- CAW Clothes

**Annie Simpson**

- Mentor Program

**All committee****volunteers**

- Set-up, clean-up, coffee bar, etc.

**If your address, phone, or email changes, notify Patrick O'Brien. This is essential in insure you receive the newsletter and other items that come to members.**

**ONEWAY Order**

CA will be placing a ONEWAY order on Monday 07-11/05. Your order must be to him NLT Sunday 7-13-05.

Check your catalog or call up the ONEWAY website at [www.oneway.on.ca](http://www.oneway.on.ca) to see what's available and email your order to CA at [cadsavoy@cox.net](mailto:cadsavoy@cox.net)

CA places orders throughout the month, so if you need a ONEWAY product, email him by the Sat. preceding the monthly meeting and he will have your order for you at the meeting. If you need something any other time during the month, send him an email

and he will order and have it to you within a week. Also check the ONEWAY website for the new turning tools .

Items can be picked up at Bryant School on the 2<sup>nd</sup>. Wed. or last Tues. monthly workshops or at the monthly meetings or by special arrangements or can be shipped to you. You pay when you receive your order.

CA Savoy::: HAPPY AND SAFE TURNING!!!!!!

**Future Plans**

**Aug 13** CAW Annual Picnic - This will be a good day with lots of activities and food

**Sep 10** TBA

**Oct 08** Marilyn Campbell – Epoxy

**Nov 12** TBA

**Dec** Annual Woodturners Ball

**This was received from Irene Grafert-**  
"I really enjoyed doing the demo for the big crowd. The best crowd I have ever had I believe. Not to mention the workshop I did on Monday...what a pleasure to find everything one could only dream about being there easy and handy. It's such a well organized, well functioning woodturning club...I hope to be back again one day, cause this was fun and without all the negative stress for once."

**19th Annual National AAW Symposium, July 22-24****Symposium Highlights**

- Three days of demonstrations
- Panel discussions
- Instant Gallery
- Annual AAW Banquet
- Trade show
- And More

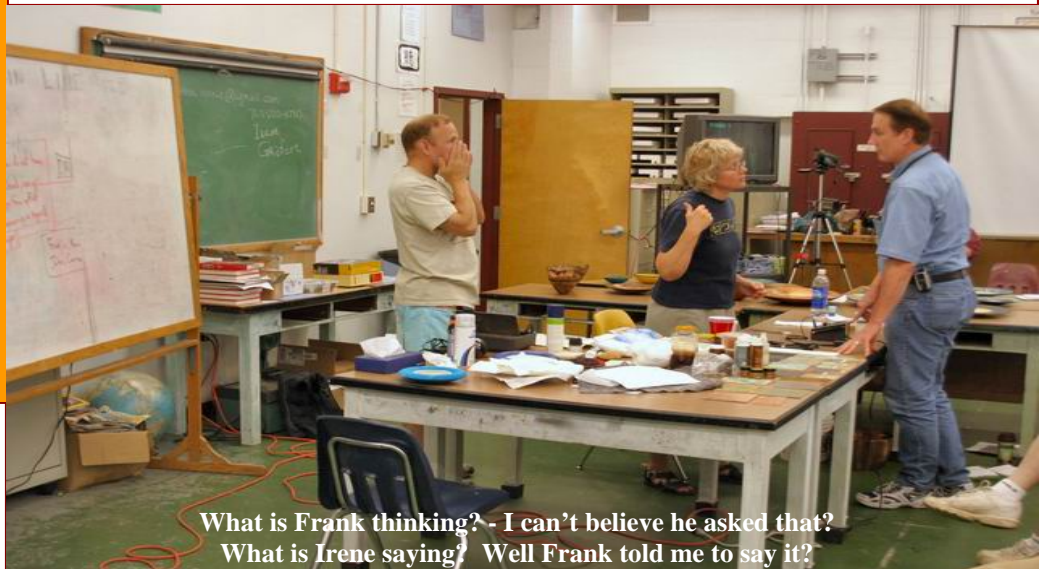
**Ways to Register**

- Register by phone 651-484-9094 or at the door. See the Journal for details.

**CAW Dinner at AAW Symposium**

With the AAW Symposium looming just

ahead, Amy Rothberg has made a reservation for CAW attendees to get together for dinner Friday evening that weekend. The reservation is at Hereford House in Leawood, KS, about a mile from the convention center. Check out the restaurant at [www.herefordhouse.com/hhleawood.htm](http://www.herefordhouse.com/hhleawood.htm). Dinner will be at 6:30 that evening. Please let Amy know right away if you would like to attend as she needs to give the restaurant a head count very soon. Contact Amy at [amy@bmr.org](mailto:amy@bmr.org) or at 703-256-0099. She will also try to coordinate transportation for those who will not have vehicles.



What is Frank thinking? - I can't believe he asked that?  
What is Irene saying? Well Frank told me to say it?



## Call of the Lathe by Tom Boley, President

What a change! Things have sure been hectic around here for the last three weeks. But I am sure hoping that this new venture will pan out alright and that I will be able to increase my hourly wage from about \$0.07/hour to a bit more. If you don't know what I am talking about, let me bring you up to date.

I mentioned briefly last month that I got a call from Don Maloney, one of our members, who lives in Bluemont and has a woodturning business. He does mostly spindle work, turning out (so to speak) dozens of balusters and other pieces for restoration projects as well as new construction. He and his wife, Harriet, an accomplished woodturner herself, are moving to Colorado to be closer to their kids so Don is selling his equipment and business, and I am the buyer. Since we decided not to buy his home and shop there in Bluemont, we found a place south of Purcellville which has a nice house and an outbuilding in which I can put the shop. However, nothing is simple, and this fits that to a tee! The building has no electricity, so I have to diagram where I want the breaker panel, the outlets, the lights, etc, and submit it to Loudoun County for an electrical permit. Then VA Power has to come run electricity to the building and I have to wire the whole thing. Once that is done, Don and I will try to move all his equipment to my new place, set it up, and hope that we can make it run in the new environment. There is a HUGE amount of work to do and I have never done anything like this before, so I will keep you posted on the process and the progress I am making as this story unfolds.

We have had a Beginners Table for Show and Tell the last few meetings and I think it has worked very well. Thanks to all you new folks for being brave enough to submit some of your work. Even if you don't want to put something on the table, please bring it in anyway as you can show it to a few folks and ask opinions about how it came out and what could be done to improve it. We can all improve our work and there are many skilled turners in CAW who would be glad to offer suggestions to you. One of the strengths of CAW upon which I have commented in the past is the willingness of everyone to help anyone else improve their work or learn a new technique. It's just the kind of folks we have here. Our mentoring program speaks volumes as to the kind of members we have and it is pure pleasure to be a part of such a great group.

As I write this on 20 Jun, the start of summer at 2:46am tomorrow is just 12 ½ hours away. Summer will bring heat and humidity, so all you woodturners who have your gear in your garage, be sure to give it an extra coat of wax to protect the bed surface of the lathe and any other equipment you have out there. It is particularly important if you don't use your equipment regularly as you won't notice when a thin coat of rust starts to form. So go now. You'll be glad you did later, or sorry you didn't.

It is enormously pleasing to be a part of such a large woodturning organization. Size gives us resources which smaller clubs just don't have. We are looking at acquiring some more full-size lathes for the Bryant shop and have been able to stock it with some excellent chucks and other gear. We bring in outside woodturners for demonstrations and workshops which are of interest to us all. The more we are able to do, the broader the Call of the Lathe is heard, and the better we are able to respond. Thanks to all of you for what each of you does to help. You are what makes CAW such a great organization. See you at the meeting.

The CAW Officers have unanimously voted for the establishment of two CAW Educational Grants. Requirements for participation are simple - you must be a member in good standing of CAW and AAW. Each Grant will not exceed \$500.00. Additional details and entry forms will be available at the July meeting. The CAW website will in the near future also have a link for an entry form and details.

## CAW Responds to Oregon Woodturner by Tom Boley

Walt Thies, an employee of the US Forest Service and an accomplished woodturner, was selected as one of several employees to represent the USFS at the Smithsonian Folklife Festival from 22 Jun through 4 Jul. He asked me for help and, on behalf of CAW, I readily agreed. That was before The Move. But once we decided we were going to sell the house and move, it was too late to shift helping Walt to someone else. He had foresters from all around the States ship boxes of branches from various trees to me. One gent drove a whole pickup load up from Western Virginia. Walt had asked that I cut it all into 7" pieces and seal the ends, box it up, and deliver it to the Mall for the Festival. He plans to turn it into mushrooms during his several days of demonstrations. There was no way I could possibly carry all that wood to the basement, cut it, seal it, and carry it back up to the garage by myself while trying to get the house ready for sale. As you who are on line know, I put out a call for help and was richly rewarded with responses from Hollis Duensing, Ed Karch, Terry Murphy, Mark Heatwole, and Tom Waters to help cut it up, seal it, and box it. Tom got here early and helped me get the band saw up from the basement, not an easy task, but that made the cutting a whole lot easier. We worked for three hours out in the driveway one evening and finally quit because it was getting too late to make that much noise. Hollis and Ed returned the next morning to help finish it all up. Gents, thanks very very much for all your outstanding assistance. This was CAW in action to help another woodturner and we all benefit from providing this kind of support.

## About Our Members by Phil Brown

**Tom Boley** will be selling his work at *Arts in the Alley* in Purcellville, VA on July 16<sup>th</sup>, the second year for this community craft show.

**John Noffsinger** has been busy getting his work out in front of the public. During June he had turnings on display & sale at Aldie Mill on weekends. A piece was juried into the Art League Gallery in June, and he will continue submitting pieces to the monthly membership shows. Check out the spring AAW magazine for one of John's platters on page 1.

**Patrick O'Brien** will take David Ellsworth's "Woodturning Master Class" from August 8 to 12, 2005 at Anderson Ranch in Snowmass Village, CO. For this class, David is only taking students who have studied with him previously.

During June and July, **Lynda Smith-Bugge's** sculpture can be seen in the Fire Flies Restaurant, 1501 Mt. Vernon Ave, Del Ray, Alexandria, VA.

At WOODCRAFT in Springfield, VA, **Richard Allen** will again teach Introduction To The Lathe on Sunday August 6, 10am - 5pm, September 10<sup>th</sup> and 11<sup>th</sup>, and on Saturday October 1<sup>st</sup>.

**Aaron Grebeldinger** will teach Bowl Turning on Thursday, August 11, 6pm - 9:30pm.

Introduction To Hollow Turning with **John Noffsinger** happens on Mondays, July 11 & 18<sup>th</sup>, 6:30pm - 9:30pm. Make a Baseball Bat with **Don Riggs** occurs Sunday July 17<sup>th</sup>. Call the WOODCRAFT store at 703-912-6727 for details on any of these classes and to register, or see [www.woodcraft.com/stores/store.aspx?id=327&nav=classes](http://www.woodcraft.com/stores/store.aspx?id=327&nav=classes).

Don't be shy! Tell us about your woodturning activities in the CAW Newsletter. Send your information by the third week of the month to Phil Brown, 7807 Hamilton Spring Road, Bethesda, MD 20817-4547. Phone and fax: 301-767-9863. E-mail: [philfbrown@comcast.net](mailto:philfbrown@comcast.net)

### Exhibit or Sales Opportunity

1. Turners age 60 and over, in our metropolitan area, will find opportunities to exhibit and sell their work in the *Senior Artist Alliance* Newsletter. Send your \$25 membership fee to the Treasurer, Joe Homes, at 7729 Rocton Ave., Chevy Chase, MD 20815. For more information, call Stuart Glickman (a CAW member), membership chair, at 301-279-2355.

2. Turned wood no bigger than 8" in any dimension is welcomed at *The Seventy-Second Annual International Exhibition of Fine Art in Miniature*, November 20 - December 30, 2005, sponsored by The Miniature Painter, Sculptors & Gravers Society of Washington, DC. Application fee \$20 with hand delivery, or \$30 for mailed submissions, due by September 10<sup>th</sup>. Get an application from Milli Shott, The Strathmore Mansion, 10701 Rockville Pike, North Bethesda, MD 20852, 301-530-0540, or email your address to her at: [exhibits@strathmore.org](mailto:exhibits@strathmore.org)

3. Applications are available for the 11<sup>th</sup> Annual National Juried Exhibition of Contemporary Craft sponsored by the Wayne Art Center, in Wayne, PA. Juror is David McFadden, Museum of Art and Design, New York. Applications and \$25 fee due by September 26<sup>nd</sup>. For an application call 610-688-3553 or see for "Craft Forms 2005". This is one the few national multimedia juried craft exhibits available.

4. The Penn Quarter Neighborhood Association produces Arts On Foot Art Market September 17<sup>th</sup> on F St. NW between 7<sup>th</sup> and 9<sup>th</sup> Streets on 8<sup>th</sup> St. NW between E and F Streets. \$50 gets you a 10'x10' tent and 8 ft. table. For other details see the application form, due July 22<sup>nd</sup>, available from For questions call 202-482-7271 or email:

[PennQuarter@ncpc.gov](mailto:PennQuarter@ncpc.gov).

## More Wood, Maybe by Tom Boley

Many of you know that Walt Thies, a plant pathologist with the US Forest Service in Oregon, is doing woodturning demonstrations on the National Mall through the Fourth of July. Many Forest Service folks cut and sent branch wood to me to prepare for him to use for his demonstrations. As noted elsewhere in this newsletter, some of you helped me prepare that wood. Interestingly, most of the Forest Service folks who offered to cut and send wood for him cut way too much, far more than he will be able to use during the Folk Festival, so we MAY have a lot of his leftovers available for our members at the July meeting. This wood is all cut into 7" lengths and the ends sealed. It all ranges from about 2 1/2" to 3 1/2" in diameter. There are about a dozen different species ranging from holly to mesquite. If you think that you may be interested in taking some home, please bring a box to the meeting! We won't know how much will be available until just a few days before the meeting.

## Bulk Purchase by Bob Holtje

I have ordered more Anchorseal and will have it for the July meeting. Bring gallon jugs. This is a good deal as sells for \$20 at Woodcraft and the club has it for \$9.50.

For Kirsten Kones - The article can be found at the San Diego Woodturners website – [www.sdwt.org](http://www.sdwt.org) under Tips and Techniques (left column). The full URL is <http://www.tridsd.com/sdwt/Images/PDF%20files/kone.pdf>. The article is a couple of years old. The Kones are now being sold by Nana and Joe and the price is currently \$44.95.

We have two committed so if we sell 3 more we can get them for 10% off - \$40.45 plus shipping - I think we can get each for \$43 including shipping. Anyone who wants one can call me at, 703-281-1820, email me at [bob@holtje.com](mailto:bob@holtje.com) or see me at the meeting.

If you need craft show displays - Richard Miller - 540-829-1077 is the person to see for good prices on the displays. He has a wide variety which are well made.

## What's on the AAW Website

Have you had an opportunity to see what all is on the American Association of Woodturner's website? If not, you will find it to be a great resource of information. Below is some of the information and links that are there for your review.

### Wood Toxicity Resources

- Articles -

Toxic Wood Chart

List of Woods Toxic to Man

Toxic Woods - HSE Information Sheet

Hazards of Inhaling Wood Dust - (NIEHS article)

Hazards of Inhaling Wood Dust - (OSHA article)

Tree identification sources - (this if for when Ed is not around)

A Common Name Index to American Woods - Romeyn B. Hough

Leaf Key - College of Natural Resources

What Tree is That - The National Arbor Day Foundation

### Woodturning Resource Listing

AAW's full Resource Listing of over 350 entries is only available to AAW members.

The full Resource Listing is distributed annually within the *Resource Directory*.

In this Listing there are links for; Galleries, Instruction, Machinery, Organizations and Wood Supplies

## Woodturning at Potomac Overlook Park by Tom Boley

Martin Ogle, the resident naturalist at Potomac Overlook Regional Park on Military Road in Arlington contacted me in the early Spring about coming to the park to do a woodturning demonstration as part of their park Open House to kick off the season on 2 May. The weather was super and I took CAW's Delta Midi out to turn a few bowls for the demo. Martin had provided some wood from the park so I was able to explain that one of the uses of fallen trees is in bowl making. A lot of folks came to the park that day and enjoyed the many displays and demonstrations which Martin had arranged for the open house. I think they all watched me making bowls at some time during the day! Martin contacted me again in mid-June asking if I would be interested in coming to the park from time to time over the summer to do some more woodturning demonstrations as he had gotten so many positive comments from park visitors about what I had done in May. When I told him that I was moving to Purcellville, he asked if others in CAW may be interested in helping him. He has even gotten interested himself. When I told him that many who may be interested in helping did not have a mini-lathe which they could bring for demos, said he is considering buying a mini-lathe for the park from a special fund to keep there for turners to use for demos. If any of you would like to promote woodturning in general and Potomac Overlook Park specifically by doing some woodturning demonstrations there, please call Martin at 703-528-5406. We will supply you with some CAW brochures to give away to those who may be interested in learning more about the craft. This is a great opportunity and you know how much fun it is to demonstrate the craft to parents and kids who find themselves fascinated by the process. Then Martin called on 24 Jun to ask if CAW would like to send a rep to a meeting at 7pm in the park office on 13 Jul. This meeting will be to discuss with various crafters some possibilities of doing regular craft demonstrations in the park. I will not be able to attend so if there is someone who would like to represent CAW to this group, please let me know at 703-569-2548 or email me at [tboley@erols.com](mailto:tboley@erols.com). Thanks.

## Information on Future Workshops

Workshops are conducted by professional woodturners. We have been fortunate with coordinating workshops in conjunction with all our visiting demonstrators. Additionally on occasion we have professional turners who are in our local area and will offer a one-day workshop.

On Friday July 8th, Dick Sing will be doing a workshop on small lathe projects and small production items. The cost is \$45.

Friday Oct 7th, Marilyn Campbell will be showing how to work with epoxy. The cost will be \$40.

Christian Burchard <http://www.burchardstudio.com/> Will conduct a one day workshop on Wednesday, 14 September, 08:30 - 3:30 at the Bryant Learning Center. Workshop will cover turning green Madrone Burl in his classic Basket Forms. The charge is \$55.

The Graeme Priddle workshop scheduled for June/July will not occur.

Workshops are conducted at the Bryant Learning Center, normal times are 08:30 – 3:30 lunch usually goes around 11:30. As you see from the above workshops, fees charged for the workshops vary. We conduct workshops on days the Bryant workshop is available.

Workshop signups. Class size is usually based on the complexity of the workshop. The more complex topics have a lower number of workshop attendees. Frank places your name on workshop list the day he receives payment. He will hold your payment until the day of the workshop. Once the workshop is filled a standby list is started. If you're paying by check please make out one check per workshop, make checks payable to CAW. If you cannot attend a workshop you have paid for, please send Frank notification so a standby can be selected and notified to fill your position.

## Newbie Notes by Ed Karch

I just finished my first year as a turner so this is my take on how to get started in this fantastic craft/art.

### How to get started

Lessons are best but books and videos also work. I did the Fairfax County adult education courses. There are also the courses at Woodcraft in Springfield. Get a mentor from the CAW mentor program. Practice practice practice. Take your questions to <http://www.woodcentral.com/newforum/turning.shtml>. This is a message board filled with nice polite folks that have centuries of turning experience and will take on any question.

### Once you are turning

How do you get feedback? My approach was to attend the CAW skill enhancement sessions. I didn't go to turn but to observe. I would take in a box of stuff and pick a couple of the instructors whose designs I liked in the show and tell at the monthly meeting. This way you can get the real tough critique that you need to improve. If you can't make it to skill enhancement, then grab your critic at the monthly meeting and ask them to judge a piece for you. You won't get a critique at the show and tell in front of the entire group, be happy. Another possibility is to post a picture on the wood central wood turning forum and ask for an honest critique. If you don't ask for a critique all you will get is encouragement and complements.

### What are you turning

Are you buying wood or turning road kill? I prefer the road kill route both for the environmental benefits and I am too cheap to pay for wood when there is mega cubic meters of wood cut in this area each day. The classic way to turn green wood is to rough out your piece then let it dry for a year before finish turning. This is fine if you have been turning for several years. If you are like me, any thing you turned six months ago goes into the firewood pile as not worth finishing. There is a way to speed this up to about a couple of weeks between rough and finish. Check out this article for more information, [http://www.woodcentral.com/cgi-bin/readarticle.pl?dir=turning&file=articles\\_473.shtml](http://www.woodcentral.com/cgi-bin/readarticle.pl?dir=turning&file=articles_473.shtml). This works. I have been using this method for two months and only lost one rather thick beech bowl.

### Where are you going

There are many things to turn and many ways to do it. Get into every workshop and view every demo you can. Try every thing you can. Think outside the box. Color outside the lines. (Attend the national symposium, you will be amazed what you see and experience, Editor).



### June Show and Tell - Photos by Don Kelley

This is a reminder that in order for your piece to appear in this section of the newsletter, at some point during the monthly meeting, you will need to bring your piece to Don for it to be photographed.



↑ The beginner's table →



Greg Downs, Douglas Fir legs for craft table 27 x 3

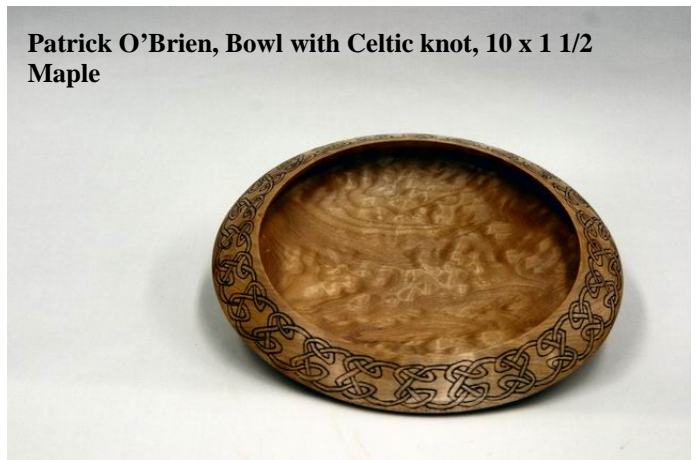
Eliot Feldman, Cherry hollow form with Walnut rim →



Patrick O'Brien, maple Box w/ Barleycorn



Aaron Grebeldinger , 10 1/2 Jatoba platter



Patrick O'Brien, Bowl with Celtic knot, 10 x 1 1/2 Maple





**Bob Grudberg, TOP - Walnut & Maple Segmented vase 9 1/2; MIDDLE Walnut & Maple Segmented vase 8"**



**John Noffsinger, Burl hollowforms, Local maple 5 1/2 x 5 1/2 and 5 x 3**



**Ed Karch, 9 1/2 Maple Bowl; BOTTOM Maple bowl with mosaics**



**Jorge Salinas, Bowls - Cherry, Cherry, Silver Maple 7 1/2, 8 1/2 and 10 1/2**



## ***New CAW Members for June***

*Welcome! We are glad you have chosen to contribute your talents to our club. We look forward to the contributions you will make and the pieces you will bring in to Show-&-Tell. Your participation will add to our mutual love of woodturning and to our collective knowledge and skill. Membership in the CAW Chapter is open to anyone interested in the art and craft of woodturning.*

<b>First Name</b>	<b>Last Name</b>	<b>City</b>	<b>State</b>
Tony	DeMasi	Woodbridge	VA
Merrie	Rose	Fairfax	VA
Stanley	Derr	Fairfax	VA
John	Noor	Alexandria	VA
Bob	Stern	Alexandria	VA



Richard Sherwood, Newsletter Editor  
Capital Area Woodturners (CAW)  
11907 Bracken Court  
Bowie, MD 20720-4480