



The CAW Newsletter is the official publication of the Capital Area Woodturners, Inc., a chapter of the AAW, and is published for the information of its members.

CAW Newsletter

<http://www.capwoodturners.org>

MAR 2006

SPECIAL POINTS OF INTEREST:

- SYMPOSIUM SCHEDULE
- FRANK'S MESSAGE
- CAW'S MENTORING PROGRAM

INSIDE THIS ISSUE:

Skill Enhancement	2
Workshop Information	3
Rotation Schedule	4
About Our Members	5
Activities Information	8
NOVA Woodworking Show	9
Show and Tell	0

CAW Mini Symposium

This year's Mini Symposium will be a series of demonstrations lasting 2 hours each. We hope you will find it enjoyable and full of learning opportunities. We will continue our tradition of having skilled demonstrators showing us their techniques, specialties and tricks. If you have attended our prior symposiums you know that in 1 1/2 hours you are able to gain insight into some topics and techniques that you may wish to pursue at a later date, so the 2 hour demos this year will be even more informative. On page 4 you will find the rotation schedule, which outlines the day of demonstrations and when each will be occurring. As always lunch is provided by the Club free of charge.

One of the goals this year was to insure that you are provided with a variety of topics and issues. With your help, Bob Pezold, our Program Director, has been able to put together a program that will insure you are able to find something of interest for every time slot.

Since we are holding our symposium, we will hold only a short business meeting and will not have the usual activities such as Show and Tell, Silent Auction and Raffle.

This is a good time to remind everyone that if you have not paid your 2006 dues, Patrick O'Brien will be available to collect them from you.

Meeting Information

Meeting Announcement:

Date: Saturday, March 11th, 2006

Time: 9:00 AM – 3:30 PM

Place: Bryant Adult Education Ctr. 2709 Popkins Lane, Alexandria, VA

DIRECTIONS TO THE MEETING:

From Virginia or Maryland, take I-495/I-95 towards the Wilson Bridge over the Potomac River.

Take Exit 177A (Rt. 1 South) on the Virginia side. Approximately 1.9 miles south of the Beltway, you will pass the Beacon Mall complex with Lowes Home Improvement Warehouse on your right. Drive past the main entrance to Beacon Mall, go 4 more stop lights – about 1/2 mile.

The 4th stop light will be Popkins Lane. Turn Left onto Popkins Lane and go 2 blocks. Bryant Learning Center entry will be on your right. Drive to the East side of the building. Plenty of parking on the side or in the rear of the building.

The entrances to the woodworking shop and meeting rooms are off the back corner of the east side of the Bryant Center.

Frank's Message

Greetings all,

I want to thank Aaron for his great demonstration on using the One-Way bowl saver. I would also like to acknowledge CA's offer of selling the setup to members at a discounted rate. What a great teaming relationship we have.

I also want to say thank you to all those members who have volunteered to share their woodturning knowledge during our annual CAW Symposium. If your planning on having family, friends, a potential Woodturner attend a meeting I'd suggest our March Symposium be the one. This will be an opportunity to attend multiple woodturning demonstrations, which spread across the woodturning spectrum. Plus lunch is on CAW. Now how can you beat that one!!

Update on our youth woodturning program with Cesar Chavez: We are waiting for updated insurance information to better understand those issues / items the school policy covers. We are attempting to set this program up on Cesar Chavez' home turf and need to respect the process.

Looking forward to seeing everyone Saturday 11 March.. Happy turning.. Frank

If you are unsure if CAW is going to meet due to inclement weather, you can call 800-839-3277. If Bryant School is open then the meeting will take place. If the school does not open, the meeting has been cancelled.

Monthly Program Details for March 11th

7:30 AM	Help set up for the demonstrations. Help get the coffee bar going or have a cup of coffee and a donut with your fellow turners. Talk tips and techniques with others. (Note the early opening. Help is needed to assist in demonstration setup. Please arrive early and assist.)
9:00 AM	A normal business meeting. A raffle will not be offered. Photos of member items will not be taken for the next CAW Newsletter. The tape library will be open. A silent auction table will not be available during the meeting.
9:30 AM - 3:00 PM	See Symposium schedule. <u>WE SUGGEST THAT YOU BRING THE SCHEDULE, ON PAGE 4 WITH YOU TO THE SYMPOSIUM SO YOU WILL KNOW WHAT THE ROTATION SCHEDULE IS. THERE ARE NO PLANS TO PRINT ADDITIONAL SCHEDULES FOR DISTRIBUTION AT THE SYMPOSIUM ALTHOUGH SCHEDULES WILL BE POSTED FOR YOUR REFERENCE. CLEAN UP AND ARRANGE AFTER SYMPOSIUM DEMOS.</u>

Skill Enhancement Workshop

At Bryant School
WED. 03/08/06
9:00AM - 3:00PM
TUESDAY 03/28/06
9:00AM - 3:00PM
 Any special requests contact:

CA Savoy at
cadisavov@cox.net
 Or: Don Riggs at
driggs11@cox.net
 Or: Don Johnson at
drjpapaw@aol.com
 Or: Aaron Grebeldinger at
erph@erols.com

PLEASE NOTE::: There is a shop charge of \$5.00. If you use any tool, i.e., band saw, lathe, drill press etc. the charge will apply. If you come to visit and just watch, then - no charge.

YOU MUST ALSO BE A MEMBER OF THE AMERICAN ASSOCIATION OF WOODTURNERS IF YOU WANT TO USE ANY OF THE TOOLS

CAW 2006 Officer Roster**Position, Name****Contact Information****President, Frank Stepanski**

228 Aquia Bay Ave
Stafford, VA 22554-5327
540-720-4202

woodturner@purespeed.com

Vice-President, Bob Holtje

2708 Willow Drive
Vienna, VA, 22181
703-281-1820

bob@holtje.com

Treasurer, Patrick O'Brien

200 N. Pickett St. #1108
Alexandria, VA 22304-2118
Tel. - days 703-519-5908
n. & wknds 703-751-0109

ohbewood@comcast.net

Secretary, Bob Reynolds

7627 Mineral Spring Court
Springfield, VA 22153
703-455-2931

reynoldsrf@aol.com

Program Director,**Bob Pezold**

8422 Mt. Zephyr Drive
Alexandria, VA 22309
703-799-1034

Operations Director**C. A. Savoy**

1309 Gatewood Drive
Alexandria, VA 22307
703-765-7268

cadjsavoy@cox.net

Newsletter Editor,**Richard Sherwood**

11907 Bracken Court
Bowie, MD 20720
301-805-1020

rcsher1@comcast.net

Club Support Volunteers**Don Kelley**

- Show and Tell Photos

Bill Bearden

- Video Library

Aaron Grebeldinger

- Education Outreach

George Salinas

- Bryant Display Window

Jonathan Hess

- Raffles/Auctions

Vacant

- CAW Clothes

Annie Simpson

- Mentor Program

All committee**volunteers**

- Set-up, clean-up, coffee bar, etc.

If your address, phone, or email changes, notify Patrick O'Brien. This is essential in insure you receive the newsletter and other items that come to members.

ONEWAY ORDER

CA places orders throughout the month. Check your catalog or call up the ONEWAY website at www.oneway.on.ca to see what's available and email your order to CA at cadjsavoy@cox.net

If you need something any other time during the month, send him an email and he will order and have it to you within a week. Also check the ONEWAY website for the new turning tools .

Items can be picked up at Bryant School on the 2nd. Wed. or last Tues. monthly workshops or at the monthly meetings or by special arrangements or can be shipped to you. You pay when you receive your order.

20% off ALL ONEWAY CHUCKS AND CHUCK ACCESSORIES + SHIPPING!!!!

2006 Plans

Apr 08 Don Derry -
Coloring hollow forms
May 13 Michael Mocho -
Texturing Hollow
forms
Jun 10 CAW Annual Picnic
Jul 08 TBA
Aug 12 TBA
Sept 09 Johannes Michaelson -
Turning full-size hats
Oct 14 TBA
Nov 11 TBA
Dec 09 Annual Woodturners

Information on Future Workshops by Bob Pezold

Workshops are conducted at the Bryant Learning Center, normal times are 08:30 – 3:30, lunch usually goes around 11:30. Fees charged for the workshops vary and will be announced with the workshop information. We conduct workshops on days the Bryant workshop is available.

Workshop signups. Class size is usually based on the complexity of the workshop. The more complex topics have a lower number of workshop attendees. I will place your name on the workshop list the day I receive payment. I will hold your payment until the day of the workshop. Once the workshop is filled a standby list is started. If you're paying by check please make out one check per workshop, make checks payable to CAW. If you cannot attend a workshop you have paid for, please send me notification so a standby can be selected and notified to fill your position. All those interested please contact me at rpezold@cox.net

Don Derry will be conducting two workshops at the Bryant Education Center in April. The first workshop on Thursday, April 6th will be on forms. This class will focus on the decision making process used by wood turners. We will explore through our hands with chips flying, many different ways to be objective about shape and form. Upon completion of the course participants shall have a much better understanding of how their own creative decision making process works and how to use it to more easily produce works in their own studios.

The second course, on Friday, April 7th will show participants how to produce a hollow form vessel using an unusual, but more comfortable reverse rotation of the lathe. The first half day consists of an introduction to the techniques of mounting the material and shaping the outside of a pleasing vessel using traditional turning practices. Later in the day we will cover hollowing the inside of the form using a reverse lathe rotation technique and special hollowing tools supplied by the instructor. All tools and the techniques can easily be learned and adapted to the more traditional counter clockwise lathe rotation. Upon completion of the class all participants should have competed a couple of small hollow forms and have a complete understanding of the techniques and tools used to produce these projects in their own studios.

These are intermediate level classes. The instructor will supply any specialty tools. Cost for each workshop is \$100 in advance. These are open workshops for all AAW members, so sign up soon. To register, or ask for more information, call Gerry Headley at (410) 286 5958 or send him an email at gerryh3333@aol.com.

(Continued on next page)

Workshop Information - (Continued)

We are in the process of scheduling a workshop with **Ernie Newman** <http://ernienewman.cjb.net>. The two dates available are April 14 and 21. One of these dates will be selected in the near future. The price will be \$40. Max of 12 people. Below is what he offers for a workshop, (we can tailor it to suit our needs and wishes).

Participants will make some of the projects listed below depending on skill level. The emphasis will be on spindle work and free end turning - traditional techniques - classical and contemporary design

- 1/ Hand thread chasing – making screw top lidded boxes with homemade chasers – chasers will be supplied and available for purchase
- 2/ Slender turning – mastering the skew chisel – turning miniature goblets with super slender stems
- 3/ Turning traditional Swiss 'Christmas trees' and spinning tops from Europe, Japan and Australia
- 4/ Turning one part wooden pens – without pen kits
- 5/ Candlesticks
- 6/ Boxes with inlays - stone, shell, wood, badges, etc
- 7/ Dolls and doll's accessories
- 8/ Natural edge eggs – you provide small burls or bits of driftwood, worm eaten wood, etc. ideally with voids or interesting natural texture – about 2x2x4 inches
- 9/ Spindle and free-end turning – skew chisel mastery – turning multiples – furniture

Here is a review of Ernie's demos;

"At lunch on the second day we had a splendid demonstration on the lathe by Ernie Newman of Australia. In about an hour Ernie covered 3,000 years of woodturning objects—from Etruscan tops to television legs of the 60s. Educational and entertaining, Ernie held our attention with humour and deft turning skills."

Alan Lacer, former AAW president, in American Woodturner December 1997.

Symposium Rotation Schedule

TIME	EVENT	PRESENTER	EVENT	PRESENTER	EVENT	PRESENTER
9:30 - 11:30	Texturing & Coloring	Doug Pearson	Needle Cases and other Small Stuff	Bill Hardy	Green Wood	Phil Brown
11:30 - 12:30	CAW Provided Lunch					
12:30 - 2:30	Vacuum Chucking Bowls	George Salinas	Form and South West Weed Pots	Ed Karch	Baby Rattles	Richard Allen

NOTE: During the day the remaining pieces of Australian burl (caps only) will be for sale at 50% off.

About Our Members by Phil Brown

CAW has just completed another group purchase of Australian burls and burl turning blocks. The purchase was organized by **Alan Becker** but the real heavy work of receiving, sorting and pricing was done by the team of **Richard Allen, Bill Fowkes, Bob Holtje** and **Jorge Salinas**. There are still several pieces available for purchase. See either **Alan** or **Frank Stepanski** at the next meeting. The club is starting to organize another purchase to take place later this summer. They have pre identified several species of burls that we would like to purchase and will be taking advance orders. More on this to come as the program becomes better defined.

Eliot Feldman now has pieces in the Red Orchard gallery at 10253 Old Georgetown Rd in Bethesda.

Gerry Headley has been working for 1½ years on getting Don Derry here to cover the design process and reverse rotation for hollow turning. Derry will be conducting workshops April 6th and 7th. See the workshop description on page 3.

Patrick O'Brien and **Bob Reynolds** made beautiful and unique spiraled long-stem goblets at the Campbell Folk School near Brasstown, NC in a class taught by Dennis Liggett in January. They highly recommend this school, located in the far southwest corner of NC, near Murphy. And this is the fourth time Patrick has attended a class there. With a new wood studio nearing completion, 34 five-day and weekend classes are scheduled for the remainder of 2006. See the woodturning class listings at www.folkschool.org. Patrick has been invited to teach an intergenerational woodturning class in July 2007, with Bob coming as his assistant. While in the Campbell craft store, Bob was pleased that the store manager admired one of his pens and placed an order for the pens. Patrick's review of the Anderson Ranch woodturning program will appear in the next issue of Woodturning Design magazine, and his review of the Campbell woodturning program will appear in the Fall edition.

Doug Pearson has gained membership to Creative Partners Gallery, a co op retail space at 4600 East West Highway, Bethesda, MD. Phone: (301) 951 9441. He is the only woodturner represented in this gallery of about 20 artists. See his work at www.turningsbydoug.com/.

Bob Holtje and **Mike Vore** will be taking Ray Key's class, *Woodturning: Aim High & Go Beyond*, in the wood studio at Arrowmont School of Arts and Crafts, April 2-8. Space may still be available for you too. Check at info@arrowmont.org or at www.arrowmount.org.

Jorge Salinas and **Bob Holtje** will be demonstrating at Potomac Overlook Park on Saturday, March 25 from 2 to 4 PM

Fairfax County Adult Education will offer pen turning classes next session on the following dates:

Mondays 5/8 to 6/12 from 7pm to 10pm Woodturning I

Wednesday 6/28 from 7pm to 10pm Pen Workshop

Wednesdays 7/12 and 7/19 Fancy Pens Pens in Alternative Materials

Saturday 7/15 at 10am to 1pm Pen Workshop

In addition, if **Drew Mitchum** can find 5 students, Fairfax County is interested in having a 3 hour pen turning class this session, most likely on a Saturday morning. The total cost of the class would be \$55. Contact Drew at: drewkari@cox.net

(Continued on page 6)

About Our Members - (Continued)

Four CAW members continue teaching at WOODCRAFT in Springfield, VA. The classes offered are:

Richard Allen has Introduction To The Lathe on Sundays March 12th, April 9th, and May 7th 10am - 5pm.

Don Riggs is doing Advanced Woodturning on Tuesdays, March 28, April 4, 11, and 18th from 6:30 to 9:30 p.m.

John Noffsinger has Introduction To Hollow Turning on Mondays, April 10 and 17th, 6:30pm - 9:30pm.

Aaron Grebeldinger will teach Bowl Turning on Thursdays, March 9, April 13, and May 11, 6pm - 9:30pm.

Tom Boley has a big line up of classes at the Leesburg WOODCRAFT store, including:

Introduction to the Lathe on March 4th, April 15th, and May 20th, 10 am to 5 pm.

Basic Bowl Turning on March 18th and April 29th, 10 am to 5 pm.

Pen making on March 9th, April 5th, and May 3rd from 6 to 9:30 pm..

Call the WOODCRAFT store at 703 912 6727 for details on any of these classes and to register, or see www.woodcraft.com/stores/store.aspx?id=327&nav=classes

Don't be shy! Tell us about your woodturning activities in the CAW Newsletter. Best to send your information by the second weekend of the previous month to Phil Brown, 7807 Hamilton Spring Road, Bethesda, MD 20817 4547. Phone and fax, (call first): 301-767-9863. E mail: phillfbrown@comcast.net

Call of the Lathe by Tom Boley

What in the world is it that draws us to this flame? I feel like a moth sometimes and the lathe is the flame. The good news is that I don't get my wings singed when I step before Stubby, Oneway, Delta, or Centauro. Well, maybe a little on Centauro, but there are compensations. I remember so clearly walking past the CAW booth at The Woodworking Shows presentation at the Dulles Expo Center, probably in about 1996 or 1997, and seeing you guys working industriously at your three mini-Jets. I stood and watched, transfixed, for an hour. I chatted with whoever was turning and then talked quite awhile with Don Chamlee who was standing out in front. Don was pretty cool, knowing he had a fish on the line. He told me about CAW and that the members were some pretty good folks. He said he had been turning for awhile and sure enjoyed it. I went to the next meeting and ended up as an officer of the club. While that was great fun, the real joy of the craft is in the doing. Also, in teaching. We have had a bunch of guys since I came aboard get into the teaching mode, and now I am going to do it, too. Oh, I have taught the craft to some folks on an individual basis but have yet to teach a formal class. Should be fun. My new neighbor out here has been bitten very hard by the Turning Bug and spends a lot of time in my shop practicing the craft. As I write this, he just finished his first bowl today and, boy, is he thrilled! His wife will be jazzed, too, you know, and that will allow him more time to come and play. As The Woodworking Show comes to town once again, I urge you to sign up to either do some demo turning or to stand out front and work the crowd. It got me interested and will probably get others hooked, too. You might even be lucky and get to work with Don Chamlee. He knows how to fish, using the Call of the Lathe as bait.

Willing to Share Your Talent? by Annie Simpson

Mentor Program Needs More Volunteers

Our monthly meetings provide a great opportunity for camaraderie and sharing some of our woodturning experiences. There is another way to share your enjoyment of woodturning with fellow club members: through the mentoring program. There are many CAW members who are currently mentoring others in our club, but on average I receive more requests for mentors than offers. As you know I'm not shy and will call someone up to see if they are available, but it's better to have a few mentor names in reserve.

What does mentoring mean? It is different for each case, but the general idea is as follows. Members who are willing to mentor tell me what they feel comfortable teaching. When someone makes a mentoring request, I check my list for the name of a mentor whose skills match the request and who lives close by. Then I email or call the potential mentor to see if they are still available to help. Once the mentor agrees, it is up to the person seeking instruction to contact the mentor and arrange to meet, usually at the mentor's shop, and at a time that is mutually agreeable. The "mentoree" also is responsible for setting up future meetings as needed. And if the match doesn't work out for either party, just let me know and I will search for someone else to help.

While there is no limit to the number of mentoring sessions, they must be at a mutually agreeable time and place. And don't forget the additional mentoring opportunity of our twice-monthly skill enhancement sessions (held during the week at the Bryant Center) which are led by Don Riggs and CA Savoy.

Whether you are looking for general instruction and turning tips or specific advice on a tool or a technique, please let me know your needs and I will do my best to find a mentor for you. There are a few mentors who have volunteered to help someone but live in remote areas, so if you are willing to drive a few extra miles to receive instruction, be sure to let me know that as well.

Our Current Mentoring Heroes (asterisks indicate number of pupils/mentorees)

Alan Becker *
 Andy Blackwell *
 Tom Boley *
 Phil Brown *
 Eliot Feldman
 Aaron Grebeldinger (youth class)
 Seth Hurlbert *
 Don Johnson *
 John Overman
 Bob Pezold *
 Don Riggs (skill enhancement)
 CA Savoy (skill enhancement)
 Michael Vore

Please email asimpson@bestmail.us with details if you are mentoring and don't appear on this list. Also correct me if you appear here and are not currently available to mentor.

Activity Information and Reminders

Do you need a reason to go to the annual AAW Symposium? This year's symposium will be held June 22nd—24th in Louisville, Kentucky. As always there will be numerous nationally and internationally recognized turners demonstrating. This year AAW will be giving away FIVE Oneway 2436 lathes free, thanks to special pricing from Oneway Manufacturing and FIFTY \$100 gift certificates donated by Packard Woodworks?

The AAW juried exhibit, reTurn to the Land of Oz that previewed at the Overland Park, Kansas AAW symposium last summer is now on view at the Grove Arcade ARTS & Heritage Gallery in Asheville, N. C. If you saw it there, you will want to see it again and show it to your friends. If you were not in Kansas, you will definitely want to see it this time. The exhibit is fantastic!

The exhibit is up and open to viewing through March 19, 2006. The gallery is open 10 AM till 6 PM Monday through Saturday and noon till 5 PM on Sundays. Various members of Carolina Mountain Woodturners will be demonstrating on each weekend beginning January 28th from 10 till 4 on Saturdays and 12 till 5 on Sundays.

The Southern Piedmont Woodturners present "A Day At The Lathe", a day of woodturning on April 1, 2006, featuring Nick Cook showing "The Basics", Bobby Clemmons doing Bowls, and Chris Ramsey turning Hats. Location is at the Historic Courthouse, 65 Union Street, Concord, NC 9:00 AM until 6:00 PM. Admission is \$35 at the door or \$30 pre-registration. The newly renovated historic courthouse features a 250 seat theatre with stadium seating. This will be a very comfortable and enjoyable day. For more information or to pre-register contact Barry Russell, 6433 Charlie Walker Rd., Kannapolis, NC 28081. Phone 704-933-9092 or e-mail brussell18@carolina.rr.com.

The Smithsonian Craft Show will be at the National Building Museum April 20-23. Wood turners exhibiting (though they may also be showing work not turned) include James Edward Barnes, Christian Burchard, Mark Gardner, Ray Jones, John Jordan, Michael Mode, Mark Nantz, David Nittmann, George Peterson, Norm Sartorius, and Joel Urruty. For more information see: www.smithsoniancraftshow.org/index.asp?content=factsheet

The Southern States Six Woodturning Symposium will occur on April 28—30, 2006 in Gainesville, Georgia. Featured demonstrators are; Ernie Newman, Dave Hout, Larry Hasiak and Keith Gotschall. There will be a total of 40 demonstrations, beginning at 1 PM on the 28th. Additional information is available at www.southernstates.org.

The Virginia Symposium will occur again this year and will be held the first weekend in November, more information to follow.

Odds and Ends

FREE 1 to 3 phase power converter Add A Phase System Analyzer Corp Model No 56 Type 2S 1 phase current 20 HP 5 Input 220/240 V 1 Phase 60 Cycle Output 220 volts 3 Phase 60 Cycle. Bought at auction as-is and it looks bad enough that I gave up, but might work if knowledgeable person works at it. Too much for me. If interested please call Walt Fink 703-360-5222.

For the March Symposium, Amy will not be bringing the Penn State Industries store. If you need something or planned on purchasing something from her at that time, let her know ahead of the meeting and she will have it available for you to purchase. You can contact Amy at amy@bmr.org or by calling 703-256-0099.

NOVA Woodworking Show by CA Savoy

The nationally popular Woodworking Show will be in our area at the Dulles Expo. Center in Chantilly, Va. on March 24,25 and 26,2006.

Show hours are:

Friday 12:00AM till 7:00PM

Saturday 10:00AM till 6:00PM

Sunday 10:00AM till 4:00PM

The Capital Area Woodturners Club has again been invited to participate in the show. We will be allocated enough space to conduct woodturning demonstrations and to display some of our finished work. CA Savoy, 703-765-7268 email cadjsavoy@cox.net will coordinate all show activities for the CAW. Annually, this is a favorite activity for our members.

This is a great opportunity for us to promote, and provide information about, our club; display our work; demonstrate the beauty and diversity of turned wood pieces: and generate interest in our chosen craft. Attendance at these shows is generally 5,000 to 10,000 people over the three days.

We plan to have three mini-lathes set up to be used by CAW members for the entire show. Those who feel comfortable turning in front of an audience are encouraged to sign up to demonstrate. All others are requested to sign up to staff the booth, answer questions, show off our displayed turnings, and promote our club and wood turning.

Please bring a few of your finished turnings to be displayed while you are at the show.

Demonstrators should do projects that take no more than about 30 minutes, if you take too much longer you tend to lose your audience, no power sanding and keep hand sanding to a minimum.

A volunteer work schedule will be provided at the March meeting. We plan to have enough participation to schedule three people demonstrating and two manning the booth on two or three hour shifts each day. Volunteers get free admission to the show. You should go to the Show office at the entrance to the show and get your pass for the day you are assigned. Come in early and visit the show or stay after your tour and see the show.

And remember "We are guests of the WW Show and are given these booths for our activities free of charge, therefore you are not permitted to sell your items nor display price tags on them at this show." If someone is interested in your work, give them one of your business cards and have them contact you later.

Also, for security purposes, until the show opens each morning, you must not be out of our booth and wondering around the floor. If this occurs, you may be asked by the security or show staff to leave the show.

Group Buy and Window Display by Bob Holtje

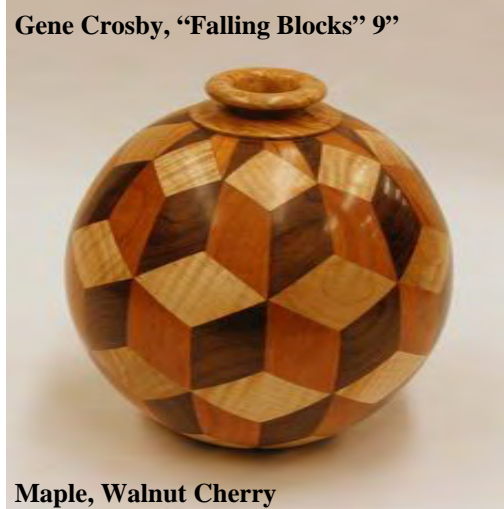
We will have the sandpaper which was ordered and some more Anchorseal. The Triton Hoods from Craft Supplies have arrived and will be available for delivery to those that ordered one. Jorge Salinas has only gotten a few pieces to change the displays in the school. Please refer to February's newsletter for details on the window display. Show off your talent and skills.

January Show and Tell - Photos by Don Kelley

This is a reminder that in order for your piece to appear in this section of the newsletter, at some point during the monthly meeting, you will need to bring your piece to Don so it can be photographed.



Alan Becker, Nested Box Elder Bowls, 12" x 6"



Gene Crosby, "Falling Blocks" 9"

Maple, Walnut Cherry



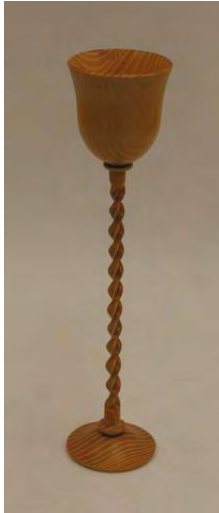
Aaron Grebeldinger, bowl and center cuts, Red Mallee

Drew Mitchum, 7 1/2 x 2" Red Mallee Burl Cap Bowl



Pat Muller, 11" x 4" Maple with Inlay
9" x 6" Cherry Burl bowl →





Patrick O'Brien, 8" Osage Orange goblet with holly stem and 10" Holly hollow form



Don Riggs, 9" sphere of Oak & Walnut



Leo Thibodeau, L to R - Southwest Segmented Form, Segmented sphere, "Animals"



CA Savoy, finial box



Richard Sherwood, Newsletter Editor
Capital Area Woodturners (CAW)
11907 Bracken Court
Bowie, MD 20720-4480

New CAW Members for February

Welcome! We are glad you have chosen to contribute your talents to our club. We look forward to the contributions you will make and the pieces you will bring in to Show-&-Tell. Your participation will add to our mutual love of woodturning and to our collective knowledge and skill. Membership in the CAW Chapter is open to anyone interested in the art and craft of woodturning.

First Name	Last Name	City	State
Bob	Bauer	Upper Marlboro	MD
Haig	Hagopian	Potomac Falls	VA
Jason	Newman	Fairfax	VA
Herb	MacDonald	Alexandria	VA

