

The CAW Newsletter

The CAW Newsletter is the official publication of the Capital Area Woodturners Chapter of the AAW, and is published for the information of its members. Membership in the CAW Chapter is open to anyone interested in the art and craft of woodturning.

Meeting Announcement:

Date: Saturday, May 11, 2002

Time: 9:30 AM — 12:30 AM

Place: *Bryant Education Center
2709 Popkins Lane
Alexandria, Virginia*

DIRECTIONS TO THE MEETING: From Virginia or Maryland, take I-495/I-95 towards the Wilson Bridge over the Potomac River. Take Exit 177A (Rt 1 South) on the Virginia side. Approximately 1.9 miles south of the Beltway, you will pass the Beacon Mall complex with Lowes Home Improvement Warehouse on your right. From the main entrance into Beacon Mall, go 4 more stop lights – about ½ mile. The 4th stop light will be Popkins Lane. Turn Left onto Popkins lane and go down 2 blocks. The Bryant Learning Center entry will be on your right. Drive to the East side of the building. Plenty of parking on the side or in the rear of the building. The entrances to the woodworking shop and meeting rooms are off the East side of the Bryant Center.

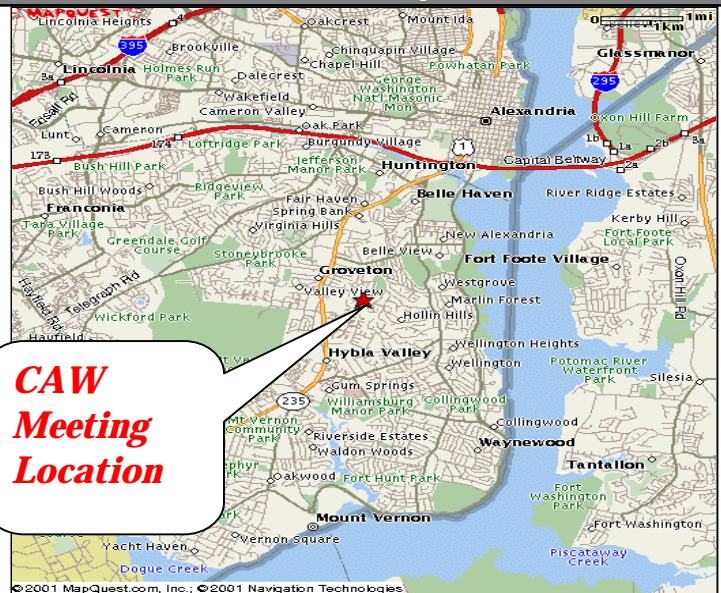
Program For The Month

8:30 AM Help set up for the demonstration. Look over the For Sale items in the equipment room. Have a cup of coffee and a donut with your fellow turners. Discuss the items put on the Show & Tell table or put in a bid on one of the silent auction donations. Rent a video. Talk over problems and techniques with someone who might already have been there and done that. Or just enjoy the normal hour of skill enhancement and practice time on the lathes.

9:30 AM Our normal business meeting. Photos of member items will be taken for the June Newsletter. The tape library will be open. A silent auction table will be available for donated wood and items. A Show & Tell of pieces brought in will be conducted. Items for sale will be displayed.

10:30 AM The program for the day will be dedicated to reviewing the basic tenets of turning safety. Bill Hardy will start off with a summary of the safe best-practices. This is of critical importance for new turners, and a valuable refresher for those who may have developed some risky habits over the years.

We want you to be active in the CAW (with all your fingers and toes) for many years; so please come and share your experiences.



**CAW
Meeting
Location**

The second part of the day's demonstrations will be set aside for members to share their safety tips and experiences. Everyone will have time to share any mistakes, the results, and what should have done differently. Anyone willing to share the details of an accident (or hopefully just a close call) is encouraged to come prepared to talk about it.

See Stefan Raab's sample story on page 3

Mark Sfirri Demonstration

Famous multi-axis turner Mark Sfirri will be doing a demo at Bryant Center on May 18th as part of a James Renwick Alliance (JRA) program related to the current exhibit of turned wood at the Renwick. Mark turns components for furniture as well as whimsical, animated sculpture and stylized sculptural pieces. Mark teaches Furniture Design, Woodturning, and 3D Design at Bucks County Community College in Newtown PA. For the workshop, Mr. Sfirri will lead a demonstration of spindle turning and, by changing the axis of rotation several ways, a piece of wood can be manipulated to create various effects. To see more of his work, see one of the links below. The demo will be from 10:00 am to 3:00 pm and will cost CAW members \$25. This is substantially less than the cost to JRA members and the public. He will also give a free slide show and talk at the Renwick on Sunday May 19 from 3:00 pm to 4:00pm. If you haven't seen the exhibit (admission is free), this is a great opportunity to see it and hear Mark's talk.

Internet References for More Information

http://www.bucks.edu/academic/arts/art_department/portfolio/sfirri/

<http://www.furnituresociety.org/confer/furn21/sfirri.html>

CAW's Mentorship Program

HONOR ROL

As of Apr 2002

Bob Grudberg *** Don Chamlee
 Don Johnson ** Bill Hardy
 Bob Pezold ** Alan Becker*
 Richard Allen **** Tom Boley**
 Andrew Blackwell ** Pat Berry*
 John Overman Richard Preston
 CA Savoy xx Don Riggs xx
 Jim Marstall *

*** denotes number of people being mentored
 xxx denotes tue & wed skill enhancement

**Many thanks to those who are giving back, by helping others.
 Any who are missing or are willing to help others, contact Paul
 Burke, at. 703-534-9076, PBurkeSr@cox.rr.com. Let's Grow
 Woodturners!**

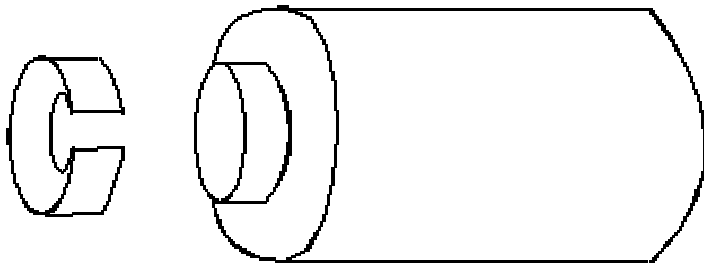
Notices for All:

- **May's Skill Enhancement Workshops at Bryant Center will be held on WED. 5-8-02 (9:00AM TILL 3:00PM) and TUES. 5-28-02 (9:00AM TILL 3:00PM)**
 You must be a member of AAW to attend !!
- **Classes at WoodCraft in May & June**
- **Richard Allen – Intro to Lathe; May 19th & June 15th**
- **C. A. Savoy – Bowl Turning; May 20th & June 18th**

Crushing your Spigots?

Today's chucks can exert considerable pressure and tend to crush a spigot turned on a wooden work piece so that rechunking is impossible and softer timber tends to move in the jaws.

Cut a ferrule from a brass tube and cut a slot in it. Then turn a spigot on the work to fit tightly inside the slotted ferrule. Twisting a screwdriver in the slot helps in fitting and removing the ferrule. The chuck can be tightened to full pressure without crushing the wood.



CAW 2002 Officer Roster

<u>Name</u> <u>Position</u>	<u>Contact Information</u>
<u>Bob Pezold</u> <u>President</u>	8018 Hammond St. Alexandria, VA 22309 202-675-4328 ext102 (work) rpezold@cox.rr.com
<u>Tom Boley</u> <u>Vice-President</u>	8316 Botsford Ct. Springfield, VA 22152 703-569-2548 tboley@erols.com
<u>Mike McInerney</u> <u>Treasurer</u>	14526 Creek Branch Court Centerville, VA 22020 703-378-8117 mikemc1421@aol.com
<u>Don Johnson</u> <u>Secretary</u>	2207 Windsor Road Alexandria, VA 22307-1019 703-329-1326 drjapaw@aol.com
<u>Tim & Sheryl Kochman</u> <u>Program Directors</u>	10411 Todman Landing Court Burke, VA 22015 703-250-4891
<u>C. A. Savoy</u> <u>Show Director</u>	1309 Gatewood Drive Alexandria, VA 22307 703-765-7268 cadsavoy@msn.com
<u>Jim Marstall</u> <u>Newsletter Editor</u>	6213 Capella Ave. Burke, VA 220215 703-644-6797 jim.b.marstall@boeing.com
<u>Club Support Volunteers</u>	Gerry Headley – Video Library Cal Frantz – Group Buy Ken Rajspis – Auctions Mary Youmann – CAW Clothes

Group Buy Program by Cal Frantz

The Craft Supplies USA order came in and delivery was made (less several back ordered items) at the April 13 meeting. The order totaled exactly \$1,586.15 retail. The club's discounted price turned out to be \$1,323.78. That is about a 17% average discount, which is considerably less than our order a year ago when the average discount was 24%. However, for some of the members who participated this year, there was virtually no discount on the items they ordered. Further, Craft Supplies USA did not process our order in a timely manner, so the shipment was not received until after the March meeting. And the back ordered items are dribbling in at a very slow pace. Overall a disappointment. Right now, it doesn't seem worth the effort to place future club orders with this supplier.

Other group buy efforts (CA glue, Anchorseal, etc.) are still providing good value for our members, and we will continue to look for new sources that offer us a good deal.

As previously announced, group buy orders are to be prepaid at the time an order is placed. Checks are preferred, and are to be made out to CAW. Orders are placed 10 days following club meeting dates. This allows an opportunity for members who cannot attend a meeting to send me an order through the mail. Delivery of all ordered items is made at club meetings.

If you have any questions about the group buy program, you can reach me by fax at 703 360 6639, or by email at calfrantz@aol.com. My address is: CFE; P.O. Box 7295; Alexandria, VA 22307.

Turning with Bob Rosand

(Reminder: Bob Rosand, AAW Vice-President and AAW Director for the Northeast region, offered to have two members from every regional chapter attend a weekend training session at his home in Pennsylvania. CAW held a drawing for anyone willing to pay the room and board. Dave Reel was one of the winners. Ed Moore also attended as a representative of the Chesapeake Woodturners Club)

Thank you all for giving me an opportunity I could not otherwise have enjoyed. Bob's two-day workshop started at 8 am when he provided breakfast. Then he made a tool handle and I made a tool handle. I learned to make smoothing cuts on gradual curves with the skew and to smooth the bottom, where the skew cuts leave some disturbed grain due to the approach from opposite directions, with the roughing gouge. Bob also provided lunch after which he made a box shaped like a small hollow form, and then I made a similar box. I learned to hollow end grain with the tool I made earlier, & felt especially good when I was able to remove an unseen ridge by feel. At 4pm we quit for the day & I went to dinner & a movie with my workshop partner, Max Hipsher. The second day, I finished making the box lid, forgetting to put on a handle! Then Bob made a tea light & I made one. I learned to gently scrape a bead & to use two special tools: a square nose scraper with a sharpened left side for cleaning up the bottom where the tea light sits, and a V shaped gouge for cutting fine grooves. After that I wasted lots of green wood just practicing making smooth curves with the spindle gouge and using the skew. Bob would watch & corrected several flaws that made a big difference in the result. Throughout the workshop, Bob freely answered questions & shared details of his techniques for detailing, avoiding sanding, finishing, tool making, and sharpening. I feel I gained a lot of knowledge and experience that will greatly speed my woodturning education.

Dave Reel

One-On-One with Bob Rosand

by Ed Moore

On March 12 and 13, I was the guest at Bob Rosand's shop where he demo-ed all aspects of his spindle work, vacuum chucks, and the use of a 1/4 inch round skew. He made a bleached maple burl turned box with a copperized twig finial, an ash bell with a padauk handle ornament, a buckeye ornament with red oak finial and icicle, an ash and walnut birdhouse ornament with a blackwood finial and acorn, maple burl oil lamp, cedar acorn birdhouse, and a locket-sized cherry acorn birdhouse with zebra wood cap. And, he insisted that I take everything that he made while I was there in addition to a candlestick. I was truly impressed by and grateful for his generosity.

And, while he listened, I used the round skew on some scraps. — incorrectly. I was trying to use the heel of the tool where it was best to turn the tool 180 degrees and use the tip. Following that correction things went much better and Bob was able to tell by the sounds that I was using it correctly.

Intertwined with all this, yet totally independent of my visit, was a request from Bob to get him a USNA cycling jersey. Following an idea of Bob Pezold, which was motivated by Bob's "verbal abuse of officers" when he visited CAW, we accepted donations

from members to purchase this and a pair of cycling shorts. . Bob knew of this plan when I was there and he sent back a turned box, a ring-holder, a birdhouse, and an ornament to be distributed among his benefactors by a drawing. As it turned out, we got the jersey and a nice warm-up suit that midshipmen wear and sent them to him a few weeks after I returned. He was extremely grateful for this gesture from the CAW.

Regretfully, in the interim, Bob's father died and Bob had an accident while riding his bicycle due to an unrestrained dog. He got a concussion and spent a couple days in the hospital.

Chuck Safety

As some of you know, I had an incident with the spinning jaws of death while demonstrating at the wood show. I got a lot of good advice about chuck safety after that, so I thought I would compile what I remember to help protect the rest of you from the dozen stitches I ended up with. My apologies to those of you who gave me advice, I don't remember who you are so I can't quote you.

Proper jaw selection and tenon sizing are the most important things you can do to prevent injury with a chuck. You should always try to size your tenon to be large enough to secure the piece, but small enough that the jaws of your chuck do not expand beyond the body. **If you need a larger tenon use larger jaws!** Don't be tempted, just because you can open the chuck - more doesn't mean you should. I was using a set of #1 jaws when turning eggcups out of stock that was about 1 1/2" in diameter. I really should have been using #2 jaws. Besides catching my forearm when I was reaching over the lathe, I nearly bumped my knuckles and caught my tool in the outstretched jaws.

One of the good ideas I got was to **paint the outer edges of the jaws with a bright nail polish so that they are more visible.** I think this is probably a good idea, even if you are using your jaws properly. The high contrast and gloss of the nail polish should provide a clear reminder not to cut your jaws or bump your knuckles.

If you must expand your jaws beyond the body it is a **good idea to wrap them with something.** Use a layer or two of duct tape just to keep things out of the gaps. Even better than duct tape would be an wide rubber band or a piece of inner tube from a wheelbarrow or similar tire. Rubber is a much better option than duct tape because it will expand and contract with the jaws allowing the chuck to be fully operational. If you can't find a big enough rubber band you might try smaller rubber bands and a thin piece of foam.

No matter what you do, don't forget that even a chuck can be a dangerous part of woodturning.

Stefan Raab

SPECTACULAR TURNED WOOD IN DC AND VA

By Phil Brown

"**Wood Turning Since 1930**" continues to be on exhibit at the Renwick Gallery in Washington DC until July 14th and **Branching Out: Contemporary Wood Turning in 2002** was at the Ellipse Arts Center, 4350 N. Fairfax Drive in Arlington, VA until May 4th. This is only the second time in the Renwick's history that it has devoted an exhibit to turned wood, and was the first time for the Ellipse Arts Center. While turned wood as an art form has come a long ways in the past 25 years, there are no plans in the works for any more turned wood exhibits. These are both first class exhibits, and as a wood enthusiast you should take them in. They could be the last turned wood exhibits you will see here in your lifetime.

"**Wood Turning Since 1930**" is a historical exhibit, complete with a 192 page color catalog containing essays and an index. It highlights the explosion in artistic wood turning in the last 25 years. While not obvious in the catalog, there also has been a vast array of new cutting tools, jigs, chucks, and lathes available in the same period. While this spectacular growth reflects the interests, efforts, and successes of a lot of woodturners, artists, entrepreneurs, and collectors since 1976, probably the most important contributing catalyst was 10 symposiums organized by Albert LeCoff between 1976 and 1981 at the George School at New Town, PA. Over 500 people participated in them, and many of these same people gathered at Arrowmont in 1985 to organize the American Association of Woodturners (AAW). The following year Albert organized the Wood Turning Center in Philadelphia. With modest beginnings, both organizations grew and played key education and networking roles in bringing about today's beautiful work.

Nearly three years ago, when I heard that the historical exhibit was scheduled for the Renwick, I thought we should have some companion activities at the same time in this area. Soon I found myself exploring three ideas: An exhibit by AAW affiliated clubs at Rock Creek Gallery, a curated exhibit drawn from private collections in this area at Rockville Arts Place, and an invitational juried exhibit at the Ellipse Arts Center in Arlington. The latter proved to be the most feasible and viable option.

Last summer, following my purchase of a new house and getting married, work got underway in earnest with Trudi Van Dyke, Director of the Ellipse Arts Center, to plan details and send out invitations to about 49 of the turners represented in the historical exhibit. (Trudi had placed the exhibit on her calendar nearly 2 years earlier.) We asked turners to send a new and quality piece for this **Branching Out** exhibit, and 38 of them did just that. We also asked for the names of three other turners they thought were doing meritorious work, but who may not have yet achieved national recognition. From these and some additional turners we asked for slides of current work to be juried by David Ellsworth, a highly regarded professional turner in PA. In February he selected 50 pieces from the slides.

We didn't start work last year in time to prepare a catalog, which is too bad since the exhibit was so good. We did anticipate \$1,050 in expenses which Trudi could not cover with her limited budget from Arlington County. I asked Capital Area Woodturners to help. They really came through for the full amount with individual contributions from members that was matched from the club treasury.

In early March pieces began arriving at the Ellipse Arts Center. Opening those boxes was like Christmas, full of surprises and wows. The plastic peanuts and other packing was finally cleaned up, pieces installed on freshly painted pedestals, and labeled. The opening day, March 16th, with a slide talk by David Ellsworth was well attended. Many people, particularly the collectors, complimented us on a fine exhibit.

Retail value of the 85 pieces for sale was an astonishing \$293,350. By the end of the first week 10 pieces had sold, totaling \$21,550. Thank You CAW! for your support of the Ellipse Arts Center exhibit.

Don't miss the final weeks of the Renwick exhibit! The Renwick Gallery, at 17th & Penn. Ave. NW in Washington DC is open 7 days a week from 10 a.m.- 5:30 p.m. Woodturning is demonstrated from noon to 3 p.m. on Wednesdays and most Sundays at the Gallery by members of Capital Area Woodturners and Chesapeake Woodturners. Renwick staff report that "the lathe demos are going exceptionally well" and are very thankful for your enthusiasm and participation in this endeavor. **Frank Stepanski's** comments mirror what has heard from others: "They had an incredible number of people cycle through, must have seen over 100, room almost constantly filled. I made a couple 7" bowls and some spin tops, all of which I gave away. They seemed very pleased with a freebie! Had a great time. Can't wait for round two."

About Our Members by Phil Brown

On Saturday and Sunday (May 4 & 5) **Bill Hardy** will be selling from his booth at the Maryland Sheep and Wool Festival, largest in the country. Come for a unique experience at the Howard County Fairgrounds from 9 to 6 on Saturday and 9 to 5 on Sunday. It's free! See every kind of sheep, goat, llama, angora rabbit etc; plus sheep dog demonstrations, sheep shearing demonstrations, and lamb to eat any way you want. To get there take Georgia Ave (MD Route 97) extended north to the traffic light at MD route 144 (parallels Interstate 70), go right (east) on 144 a few miles and the fairgrounds which will be on your left between 144 and Interstate 70.

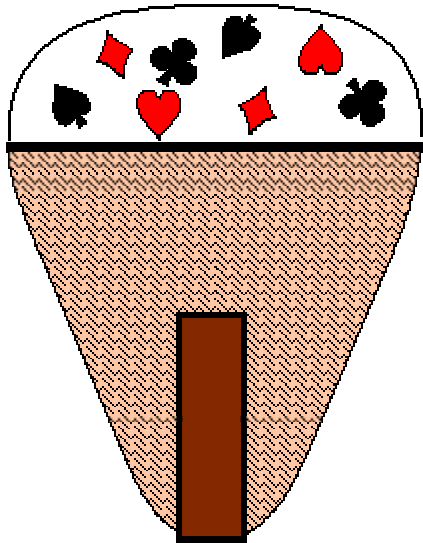
Mike Kinney and **Lynda Smith-Bugge** were awarded CAW education scholarships at the April 13th meeting.

Tell others about your activities in the CAW Newsletter by sending information, before the end of the month, to Phil Brown, 7807 Hamilton Spring Road, Bethesda, MD 20817-4547. Phone and fax: 301-767-9863. E-mail: philfbrown@greenbelt.com.

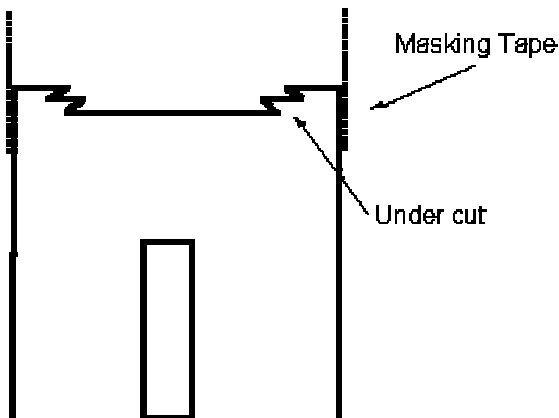
CAR GEAR KNOBS



1. Turn a simple cylinder of dense wood 55 mm x 55 mm. The wood needs to be dense in order to cut a thread in it later on
2. Drill a 9 mm hole in the center of a flat face about 40 mm deep.



3. Make a simple arbor from an old bolt filed down to just .5 mm over the hole size and mount in a Jacobs chuck in the headstock.
4. Undercut a small recess in the end about 40 mm across. This gives the resin something to grip as it doesn't stick to flat wooden surfaces very well and I have had it separate.
5. True up the outside diameter to center the knob on the arbor.
6. Remove from the arbor.
7. Build up the side about 30 mm with masking tape to form a well for the resin.



8. Mix up a small amount of embedding polyester and some contrasting pigment e.g. black. (For every 30 mls of resin use 3-4 drops of catalyst. This mixes enough for 4-5 knobs.)
9. Allow to set 24 hours and keep covered and clean
10. Place the item to be embedded on top. If it tends to float it will need sticking down first. Plants or items containing moisture don't work very well. Suggests include nuts, bolts, coins, stones, artificial flowers, shells and metal buttons. If it fails, the amount of resin is not great and the cost is small.
11. Mix up clear resin in a clean container such as a washed aluminum drink can and use clean "icypole" sticks. 30 ml resin to 4 drops of catalyst.
12. Stir very gently and try to avoid bubbles.
13. Pour the mixture into the well . With a clean toothpick work any bubbles to the side. You have lots of time if you use the proportions above.
14. Allow to set. It will go hard and slightly tacky on the outside.
15. Remove the masking tape and mount the block back on the arbor in the Jacobs chuck.
16. Start scraping the knob to shape, keeping in mind the position of the embedded material.
17. When you have the desired shape, sand thoroughly using 120 - 600 wet and dry paper. Use the sandpaper wet as it doesn't clog so much with plastics. It does get messy!
18. Polish with "Extra cut Auto Cream" and finish with "Brasso" or "Silvo". Finish the wood with wax/oil.
19. Measure the thread on the car gear stick and drill the knob out one size smaller and screw the knob onto the gear stick. You could drill and tap to the appropriate thread but this doesn't seem necessary. (Gear stick threads are not uniform).

By Jim Head

Reprinted with permission from a British Woodturning Guild website. Dimensions and product names/descriptions are in "English" English and may not be familiar to American turners.

Update on C.A. Savoy

Upon his return home, following our April meeting, **C.A. Savoy** suffered chest pains and arm numbness. After a little research, he recognized that his discomforts were signs of a heart attack, and had Joyce take him to the hospital. There was a close call in the hospital and several frightening days for Joyce. Following a procedure that inserted a stint to hold an artery open, C.A. was on the road to recovery and home after about 4 days. Falling into the "You can't keep a good man down" category; C.A. plans to teach his scheduled bowl turning classes at Wood Craft on May 20th and June 18th, 2002.

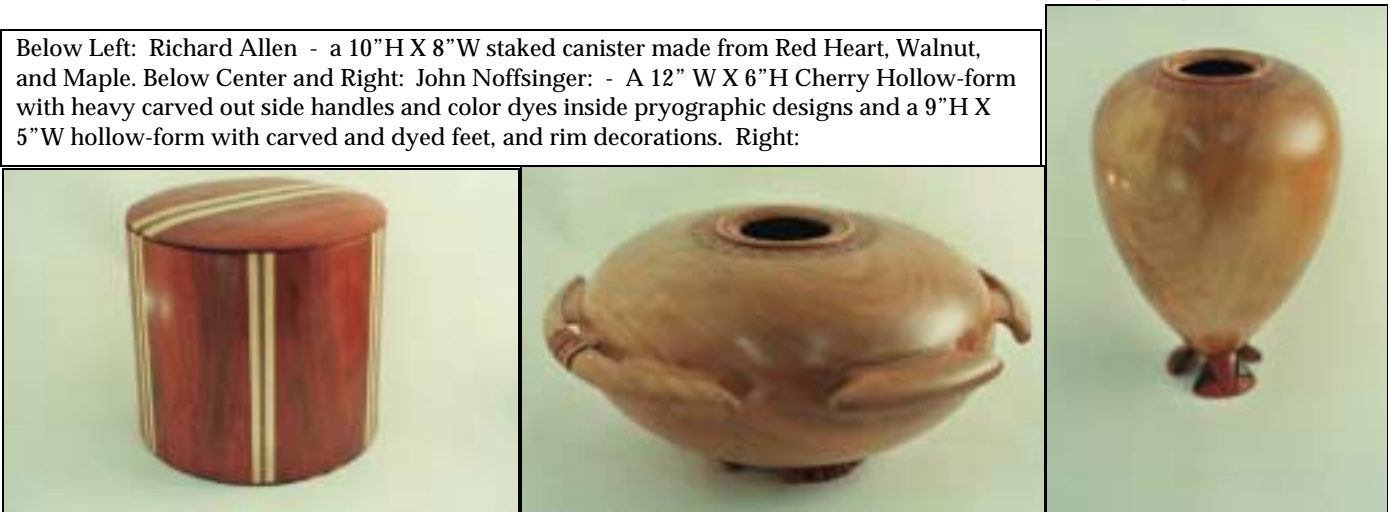


Left: John Overman - 2 birds resting on logs for the collaborative challenge. Center: Don Johnson - a 15”L X 3” W Curley Maple pointed bowl. Right: Pete Walsh - a 7”W X 3 ½”H Apple bowl and an 11” Oak platter



Left: Jim Marstall - a 20”W X 6”H Cherry bowl with black dyed rim and carved (shaky-handed) accents stripes. Center: Bob Grudberg - 2 5”bodied Walnut birds for collaborative challenge with fantail back feathers. Right: Patrick O’Brien - 12”W X 2”H Maple bowl; a 6”H X 2”W Red Maple hollow-form, and a 7”W X 5 1/2” “hollow-form from Osage Orange

Below Left: Richard Allen - a 10”H X 8”W staked canister made from Red Heart, Walnut, and Maple. Below Center and Right: John Noffsinger: - A 12” W X 6”H Cherry Hollow-form with heavy carved out side handles and color dyes inside pryographic designs and a 9”H X 5”W hollow-form with carved and dyed feet, and rim decorations. Right:



Left: David Jacobowitz - an 11”H X 5”W Walnut vase. Center: Don Johnson - a 6”W natural edge spalted Birdseye Maple bowl; a 4”H Maple lidded bow, and a 8”W X 4”H fluted bowl. Right: Felton Gilliam - a 10”W Poplar platter with a 7” long tree ornament made from Maple and Ebony and a 5” Poplar tree ornament with hand-painted butterflies by his wife Debbie



Left and Center: - Don Riggs, a couple of birds feeding their young for the collaborative challenge and 5 bowls of Madrone, Walnut, and Cherry. Right: Dave Butts - a 5"W X 2"H Pear bowl



Left: Don Chamlee - a 4"H lidded box made of spalted Curley Maple and two bowls made from Brazilian Cherry and Honduran Rosewood. Center: Mike Kinney - an ornament of Cherry Burl and Ash and two lidded boxes made of Pear. Right: Neil Kagan a 4"H X 5"W Maple Burl, hand carved to give the rim and sides texture and relief.



Left and Center: Don Hart - 9 miniature vases made from Tagua Nut, Padauk, and a mystery wormy wood. The largest size is 2" high - some with threaded lids. The left photos is one of his miniatures with 3 teeny-tiny flowers mounted inside. I just couldn't get close enough for the picture to do justice to the quality of work.



Left: Don Riggs - three 9"W Maple bowls

Jim Marstall, Newsletter Editor
Capital Area Woodturners (CAW)
6213 Capella Ave.
Burke, VA 22015

CAW Newsletter — May 2002

New CAW Members for April 2002

Welcome all! We are glad you have chosen to add your talents to our club. We look forward to the contributions you will make and the pieces you will bring in to Show-&-Tell. Your participation will add to our mutual love of woodturning and to our collective knowledge and skill.

<u>First Name</u>	<u>Last Name</u>	<u>City</u>	<u>ST</u>
Jeff	Battles	Arlington	VA
Cathy	Bodenhorn	Dunkirk	MD
Gavin	Bodenhorn	Dunkirk	MD
Greg	Bodenhorn	Dunkirk	MD
Kyle	Bodenhorn	Dunkirk	MD
Debra	Breton	Potomac Falls	VA
Linda	Creamer	Cabin John	MD
Greg	Downs	Alexandria	VA
Jeff	Fleisher	Herndon	VA
Carl	Gagliardi	Woodbridge	VA
Ed	Hartman	Alexandria	VA
Pat	Howard	Springfield	VA
Don	Johnson	Ijamsville	MD
Paul	Mazzi	Cabin John	MD
Brenton	Mosher	Fredericksburg	VA
Jim	Nichols	Falls Church	VA
Jerry	Swartz	Rockville	MD
Adrian	Taylor	Burke	VA
Tom	Yuditsky	Clifton	VA
James	Frazier	Great Falls	VA
Gene	Kopf	Bethesda	MD

