

The CAW Newsletter is the official publication of the Capital Area Woodturners, Inc., a chapter of the AAW, and is published for the information of its members.

# CAW Newsletter

<http://www.capwoodturners.org>

NOVEMBER  
2007

## SPECIAL POINTS OF INTEREST:

- **BILL GRUMBINE WORKSHOP**
- **EAGLE CANE PROJECT**

## INSIDE THIS ISSUE:

- Monthly Details 2
- Oneway Sale 3
- Upcoming Schedule 3
- President's Message 4
- About Our Members 6
- Wood For Sale 7
- Show N' Tell 8

## Our Demonstrator for November - Bill Grumbine

Bill Grumbine owns a small woodworking business, 'Wonderful Wood,' specializing in woodturning, teaching, and custom furniture. His shop is located in eastern Pennsylvania, between Kutztown and Allentown.

From Bill's website - "In this day of modern technology, as we are surrounded more and more by the cold and aseptic perfection of plastic and metal, nothing is quite like the feel of real wood. The turnings available on our site are all one of a kind creations, most of them coming from local trees that have come down due to storm, disease, age, or a host of other reasons. The wood is salvaged, and given a new life, instead of being sent to the landfill or the fireplace. Through the modern miracles of technology, you can see the very piece you are buying. It isn't a copy, it isn't "sort of like this one", it is the one you see. While we turn ornamental pieces, our true love is functional bowls. These beautiful bowls are suitable for display, but they are also suitable for holding salad, popcorn, chips, or anything your heart desires. Each bowl is turned to maximize the natural beauty of the wood. Occasional defects in the wood are preserved, adding to the unique nature of each piece. Besides, bowls are like people. None of them are really perfect. Of course, as a good friend of mine likes to say, if it don't hold soup, it's art."

See the next page for some examples of Bill's work.

## Meeting Information

### Meeting

#### Announcement:

**Date: Saturday,  
November 10<sup>th</sup>, 2007**

**Time: 9:00 AM - 3:30 PM**

**Place: Bryant Adult Education Ctr. 2709 Popkins Lane, Alexandria, VA**

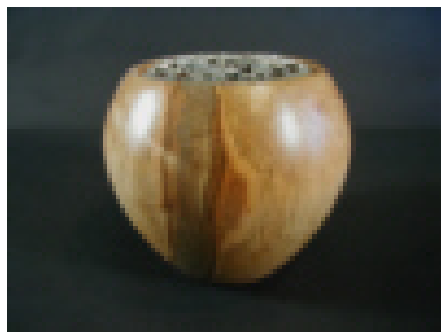
#### **DIRECTIONS TO THE MEETING:**

From Virginia or Maryland, take I-495/I-95 towards the Wilson Bridge over the Potomac River.

Take Exit 177A (Rt. 1 South) on the Virginia side. Approximately 1.9 miles south of the Beltway, you will pass the Beacon Mall complex with Lowes Home Improvement Warehouse on your right. Drive past the main entrance to Beacon Mall, go 4 more stop lights - about 1/2 mile.

The 4th stop light will be Popkins Lane. Turn Left onto Popkins Lane and go 2 blocks. Bryant Learning Center entry will be on your right. Drive to the East side of the building. Plenty of parking on the side or in the rear of the building.

The entrances to the woodworking shop and meeting rooms are off the back corner of the east side of the Bryant Center.



## Monthly Program Details for November 10th - \$5.00 Demo Fee

- 8:30 AM** Help set up for the demonstration. Look over the For Sale items in the equipment room. Help get the coffee bar going or have a cup of coffee and a donut with your fellow turners. Discuss the items in the Show & Tell table. Rent a video. Talk tips and techniques with others.
- 9:00 AM** Show and Tell
- 9:30 AM** Abbreviated business meeting will be held. A raffle will be offered. Photos of member items will be taken for the next CAW Newsletter. The tape library will be open. A silent auction table will be available for donated wood and items. Bring something to donate!!!
- 10:00 –3:30** **Bill Grumbine** will demonstrate 3 different types of bowls, a Natural Edge Bowl, a Winged Bowl, and what he calls his "Banana Bowl."
- 3:30 PM** Clean-up. Arrange meeting room back to school standards. Everyone's help is needed and requested.

## Skill Enhancement Workshop

At Bryant School  
**WED. 11/14/07**  
**9:00AM - 3:00PM**  
**TUESDAY 11/27/07**  
**9:00AM - 3:00PM**  
 Any special requests contact:

CA Savoy at  
[cadisavov@cox.net](mailto:cadisavov@cox.net)  
 Or: Don Johnson at  
[dripapaw@aol.com](mailto:dripapaw@aol.com)  
 Or: Al Melanson at  
[almelanson@msn.com](mailto:almelanson@msn.com)

PLEASE NOTE::: There is a shop charge of \$5.00. If you use any tool, i.e., band saw, lathe, drill press etc. the charge will apply. If you come to visit and just watch,

then - no charge.

***YOU MUST BE A MEMBER OF THE AMERICAN ASSOCIATION OF WOODTURNERS IF YOU WANT TO USE ANY OF THE TOOLS***

**CAW 2007 Officer Roster****Position, Name****Contact Information****President, Frank Stepanski**

228 Aquia Bay Ave  
Stafford, VA 22554-5327  
540-720-4202

[woodturner@purespeed.com](mailto:woodturner@purespeed.com)

**Vice-President, Gerry Headley**

3017 Sanford Place  
Owings, MD 20736  
410-286-5958

[gerryh3333@aol.com](mailto:gerryh3333@aol.com)

**Treasurer, Patrick O'Brien**

200 N. Pickett St. #1108  
Alexandria, VA 22304-2118  
Tel. – days 703-519-5908  
n. & wends 703-751-0109

[ohbewood@comcast.net](mailto:ohbewood@comcast.net)

**Secretary, Al Melanson**

5561 Ann Peake Drive  
Fairfax, VA 22032  
703-250-6781

[almelanson@msn.com](mailto:almelanson@msn.com)

**Program Director, Bob Pezold**

8422 Mt. Zephyr Drive  
Alexandria, VA 22309  
703-799-1034

[rpezold@cox.net](mailto:rpezold@cox.net)

**Operations Director, C. A. Savoy**

1309 Gatewood Drive  
Alexandria, VA 22307  
703-765-7268

[cadjsavoy@cox.net](mailto:cadjsavoy@cox.net)

**Newsletter Editor, Richard****Sherwood**

11907 Bracken Court  
Bowie, MD 20720  
301-805-1020

[richard@sherwoodsweb.com](mailto:richard@sherwoodsweb.com)

**Club Support Volunteers****Don Kelley**

- Show and Tell Photos

**Bill Bearden**

- Video Library

**Aaron Grebeldinger**

- Education Outreach

**George Salinas**

- Bryant Display Window

**Jonathan Hess**

- Raffles/Auctions

**Ed Parelhoff**

- CAW Clothes

**Annie Simpson**

- Mentor Program

**Priscilla Glasow**

- Group Buy

**Tom Boley**

- Newsletter Proofreader

If your address, phone, or email changes, **notify Patrick O'Brien**. This is essential to insure you receive the newsletter and other items that come to members.

**ONEWAY ORDER**

CA places orders throughout the month. Check your catalog or call up the ONEWAY website at [www.oneway.on.ca](http://www.oneway.on.ca) to see what's available and email your order to CA at [cadjsavoy@cox.net](mailto:cadjsavoy@cox.net).

If you need something any time during the month, send him an email and he will order and have it to you within a week. Also check the ONEWAY website for the new turning tools .

Items can be picked up at Bryant School on the 2<sup>nd</sup> Wednesday or last Tuesday during the Skill Enhancement workshops, at the

monthly meetings or by special arrangements, or orders can be shipped to you. You pay when you receive your order.

**CAW--ONEWAY SALE OF THE MONTH—NOVEMBER**

**20% OFF!!! MOST PRODUCTS EXCEPT LATHES!!!!!!!**

**PLUS SHIPPING!!!**

*Will provide quote upon request.*

**Happy and Safe Turning!!!**

**CA SAVOY**

**Information on Workshop by Bob Pezold**

Workshop signups. Class size is usually based on the complexity of the workshop. The more complex topics have a lower number of workshop attendees. I will place your name on the workshop list the day I receive payment. I will hold your payment until the day of the workshop. Once the workshop is filled, a standby list is started. If you're paying by check, please make out one check per workshop. Make checks payable to CAW. If you cannot attend a workshop you have paid for, please send me notification so a standby can be selected and notified to fill your position.

**Bill Grumbine** will be doing a workshop on November 9th from 8:30 until 3:30. Cost is \$50. "Participants are to bring the wood they wish to use. Wet wood is always best for classes like this. Dry wood is not forbidden if that is what people want to use. Regular blanks or natural edged blanks are fine as well. Not everyone has to be doing the same thing. We will be doing whatever people want, so if they want to practice roughing out and go no further, that is fine, but turning green to finish is always fun too."

"Blanks should be sized to fit the lathe, as well as the turner not a problem. Blanks in the 8"-10" range should do well for just about everyone."

**Upcoming Schedule**

<b>December 2007</b>	Woodturner's Ball	<b>April 2008</b>	CAW Symposium
<b>May 2008</b>	Nick Cook	<b>June 2008</b>	CAW Picnic
<b>July 2008</b>	Stewart Batty	<b>August 2008</b>	Judy Ditmer

## The President's Message - Frank Stepanski

I want to thank our very own exceptionally talented Cajun CA Savoy for showing the club some of his variety of Ornament designs. I especially enjoyed the Snow men variations, the wine stoppers, table tops and lapel pins, a snow man connoisseur's dream come true. With the cooler weather setting in, the theme was most appropriate. The CA Savoy DVD will be available in our video library for those who missed or wish to review.

I want to thank everyone for tolerating the extended CAW business meeting. This is a mandatory event we must endure each year and I very much appreciate your patience in sitting through all the enlightening discussions. I would also like to thank all those who e-mailed or opened discussion at the meeting with constructive ideas and comments on our budget. I'm highly confident we have a very solid plan in place and will be adding at least one additional professional demonstrator to our 2008 schedule. We will conduct Officer Elections, our last bit of official business during, our November meeting.

We have a need for volunteers who are willing to host our guest turners. We would like to have a pool of members to draw from on an as-available basis. Essentially your duties will include providing them with a place to sleep and food. Occasionally we may need to arrange airport pickup and drop off and transportation to and from our meetings, though transportation can always be arranged separately with someone else

Looking forward to seeing everyone Saturday November 10th. Semper Fi. Frank

Here are some photos of Mark Gardner with two of the items he turned during his demonstration to our club in September.



Photos courtesy of **Gary Guenther**.

## The Eagle Cane Project by Hank Cloutier (NVCA)

The Northern Virginia Carvers got involved with the Eagle Cane project that was started in Oklahoma by a retired navy chief who had watched a program by Peter Jennings on wounded warriors being attended to at Walter Reed hospital. He decided to produce canes for these veterans as a sign of honor and respect and as a token of thanks and gratitude for their service and sacrifices to our country. This was started with the one woodcarving club in Oklahoma and has now spread to clubs in 20 states. When the NVCA got involved we realized that being here in the DC area and with two of the major hospitals for the wounded, our small group of carvers would not be able to do much without outside help. That's when we contacted the **CAW** and formed a partnership to supply these canes to the veterans. With our carvers producing the heads and **CAW** turners providing the shaft and we have been very successful with this effort.

When we go out and present canes or attend functions with the veterans we try to get participants of both groups to attend and really see what they have contributed to. Ask any of those who have attended one of these sessions and they will tell you that it is a most humbling and gratifying experience. Most of our members are working and cannot attend these functions and the organizers that set up these function request that we keep it down to just a few members at a time. This does not allow all that participated in this project to see first hand the result of their involvement. That is why I created the **CAW** presentation cane and had it signed by the veterans at the hospital to, in a small way, thank those **CAW** members who have contributed to this effort and have not had a chance to participate in the actual presentations or gatherings. The presentation, shown below in the photos, at the CAW meeting was made by Sgt Tai Cleveland and Sgt Charles Eagleston. These two men were the representatives for the vets at Walter Reed and Bethesda and it was their idea to personally thank all the **CAW** members for their contributions to this cause.

(You may remember that America has lost two wounded heroes whose signatures are on our cane.) [Editor]



(Mike DeWan, Sgt. Cleveland, Sgt. Eagleston and Al Melanson)

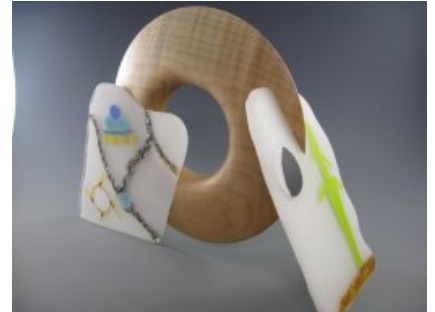


(Bob Pezold, Hank Cloutier and Sgt. Eagleton)

## About Our Members by Phil Brown

From November 17, 2007 to March 3, 2008, two **Phil Brown** pieces will be in the juried Members Exhibition in the Community Gallery at the Fuller Craft Museum, Brockton, MA. The opening reception is December 9th. See [www.fullercraft.org](http://www.fullercraft.org)

**Ed Karch** recently studied with Jimmy Clewes at Canyon Studios in Copper Canyon, Texas. Their work included kiln formed glass combined with turned wood. This place is a new and expanding training facility northwest of Dallas. For more information, see [www.canyonstudios.org/default.htm](http://www.canyonstudios.org/default.htm)



**Bill Hardy** will again be doing the show in Great Falls this year on November 30 through December 2 at the home of **Laura Nichols**, 438 Riverbend Road (1 and 1/4 miles north of Georgetown Pike and down a long gravel drive). It's a fun weekend for us and for shoppers and browsers also. Big country kitchen full of food, about 12 artists with different stuff and informal entertainment Friday, Saturday and Sunday throughout the day in a beautiful old and big farmhouse.

**John Noffsinger** received an Equal Award at the Art League October members show for "Diamonds are Forever", which is shown on page 27 of the AAW book "Step Up To The Plate", and on his website: <http://www.johnnoffsinger.com/Chris%20Tribute%20Platter%202-8-06.jpg>. John had a booth at the 38th Annual Bluemont Fair, Bluemont, VA, September 15 & 16th, where they had "crafts, music, food, and good all around mayhem" [www.bluemontfair.com](http://www.bluemontfair.com) On November 6th, John will give a slide presentation to Mid-Maryland Woodturners ([www.mmwtc.org](http://www.mmwtc.org)), meeting at 7 PM in the Delaplaine Center in downtown Frederick, MD.

In July and August, **Frank Stepanski** had a display of turned items at the Liberty Town Arts Center, in downtown Fredericksburg VA.

**Richard Sherwood** sold one of the two turnings he had in the *ArtWorks* show in Chestertown, Maryland. The show ran from October 5th to the 20th, 2007.

Half of Elements: Wood and Thread was a solo exhibit of 31 turned wood pieces by **George Van Dyke** at the Shooting Star Gallery, Suffolk, VA, September 15 to October 21, 2007. Details at [www.shootingstargallery.net](http://www.shootingstargallery.net).

**Clif Poodry** will teach a bowl turning class on November 24th at The Woodworkers Club in Rockville, MD. See <http://www.woodworkersclub.com/practice%20class1.htm>.

**Bob Stern** and **Aaron Grebeldinger** teach an introductory lathe class for turning pens on the third Saturday of every month at the Wood Shop on Gunston road at Fort Belvoir.

**Aaron Grebeldinger** will teach Bowl Turning on November 29th and December 6th from 6 - 9:30PM, at WOODCRAFT in Springfield, VA. Introduction To Hollow Turning with John Noffsinger is on Mondays December 10th and 17th from 6:30pm - 9:30pm. Call the store at 703-912-6727 to register, or see [www.woodcraft.com/stores/store.aspx?id=327&nav=classes](http://www.woodcraft.com/stores/store.aspx?id=327&nav=classes)

**Tom Boley** will be teaching Bowl Turning, Saturday November 3rd and January 5th, and the Natural Edge Bowl, on Saturday December 1st, from 10pm - 5pm at the Leesburg WOODCRAFT store. To register, call

## About Our Members (continued)

703-737-7880 or email them at: [Leesburg@Woodcraft.com](mailto:Leesburg@Woodcraft.com). See the class schedule at: <http://www.woodcraft.com/stores/store.aspx?id=575&nav=classes>.

Don't be shy! Promote yourself. Tell us about your woodturning activities in the CAW Newsletter. Best to send your information by the second weekend of the previous month (since newsletter deadline may be early in the month) to Phil Brown, [phillbrown@comcast.net](mailto:phillbrown@comcast.net), or call 301-767-9863.

---

### Future Exhibit Opportunity

The 12th biennial exhibition by the Washington Woodworkers Guild (WWG) is scheduled for October 2008 at Del Ray Artisans in Alexandria. The application deadline has not been announced, but will likely be in August 2008. Turned work by CAW/WWG members has been an important part of this exhibit in past years in terms of number of objects displayed and sales. Do plan to participate and help expose the community to turned wood!

## Membership Number Trivia by Phil Brown

From time to time, someone kids me about Montgomery County Woodturners (MCW) competing with CAW. I have wondered what the membership overlap was between the two groups and whether there is any measurable impact of MCW on CAW membership. I looked at a CAW list of 246 paid members from September.

CAW has 46 members residing in Maryland, which is 18 percent of the membership. Among 28 MD members not residing in Montgomery County, most are either closer to the Bryant Center than Rockville (much of PG, Anne Arundel, and Charles Counties) or probably can only make the trip in daylight hours or on Saturday, rather than on Thursday evening when MCW meets. For most Montgomery County turners, it takes about an hour or more, traveling around the beltway or by other route, to arrive at the Bryant Center on a Saturday morning.

In September, 16 MCW members were also CAW members, and 15 of these were from Montgomery County. Not all CAW members residing in Montgomery County are MCW members. Only 88 percent are MCW members. With 58 MCW members in mid-September, 28 percent of MCW members are also CAW members, a lower percentage than I expected. Five percent of MCW members are from DC and VA. Among MCW Maryland members, 93 percent reside in Montgomery County.

The membership in CAW from Maryland has had only one chance to change because of competition from MCW - that is not renewing membership in 2007. That did occur with three individuals, but a fourth person began a CAW membership. Seems like most of the potential MCW impact could occur in the 2008 calendar year with an increase or decrease in CAW renewals or new members from Montgomery County.

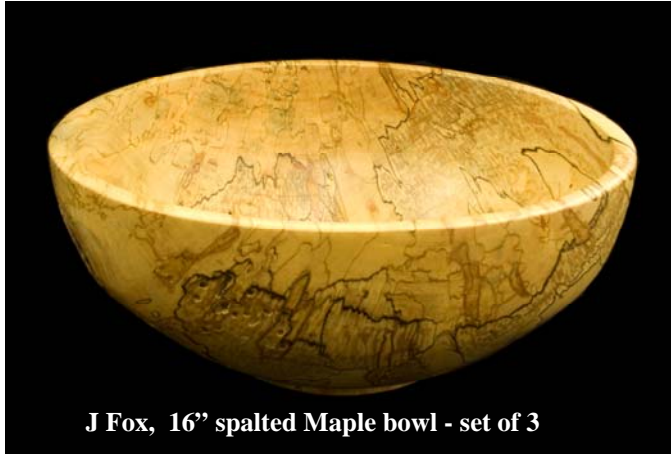
As we know, the CAW membership is mostly from Virginia, 76 percent. Only one percent is from DC, 18 percent from MD, and five percent is from 12 other States. (Note: Percentages are arbitrarily rounded to whole numbers to total 100 percent.)

## Wood For Sale

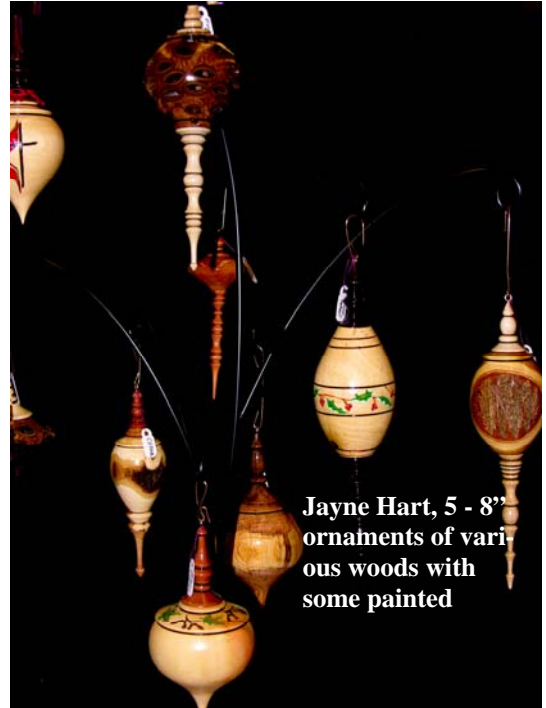
If you are interested in purchasing **black walnut**, you can contact Jim Dampus at 301-758-3439. He has several acres of woods with various species of wood. Nothing has been cut down, which is something you would have to discuss with him as to how large of a tree, how much wood needs to be taken, etc.

## Show and Tell for October by Stuart Glickman

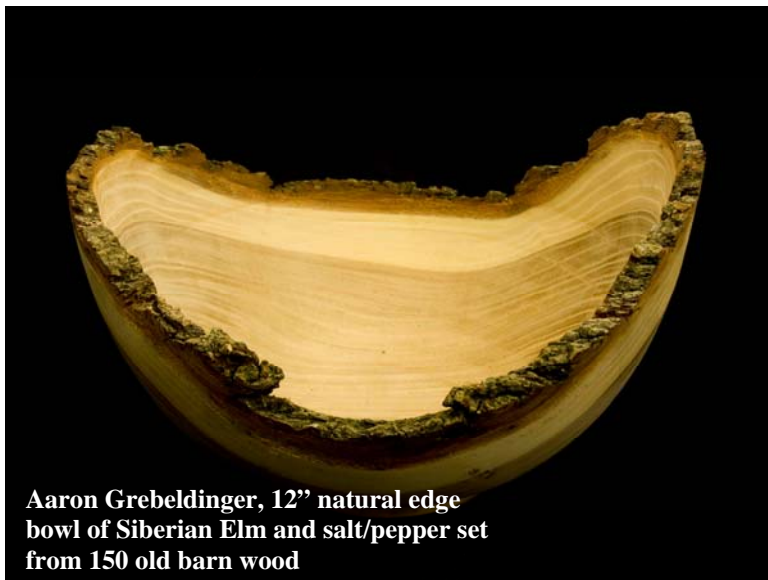
This is a reminder that in order for your piece to appear in this section of the newsletter, at some point during the monthly meeting, you will need to bring your piece to Don so it can be photographed.



J Fox, 16" spalted Maple bowl - set of 3



Jayne Hart, 5 - 8" ornaments of various woods with some painted



Aaron Grebeldinger, 12" natural edge bowl of Siberian Elm and salt/pepper set from 150 old barn wood



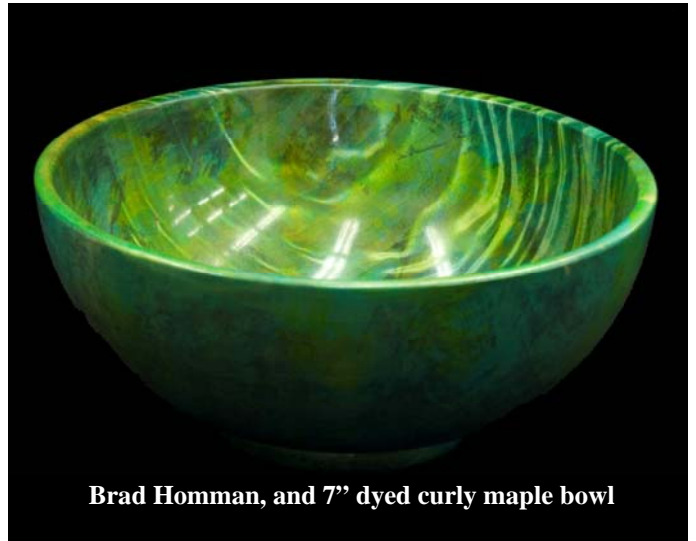
Don Kelley may not be available to take pictures of the instant gallery in November. If you are interested in taking the pictures of the items brought to you during the meeting for photographing, please let Frank Stepanski know. Thanks



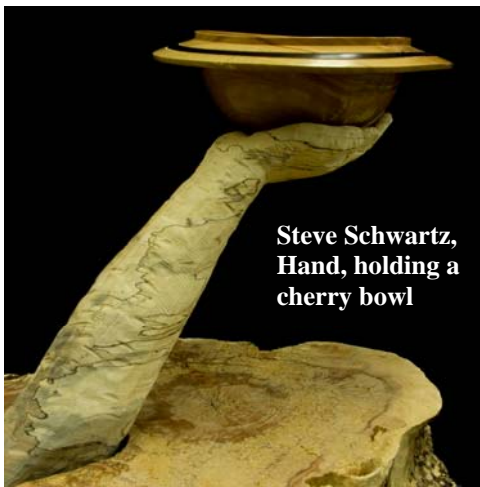
**Show and Tell for October (continued)**



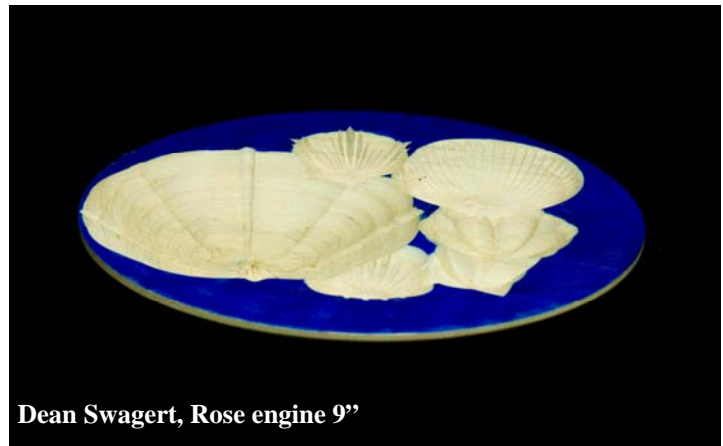
**Patrick O'Brien R - lidded box with Blackwood finial**



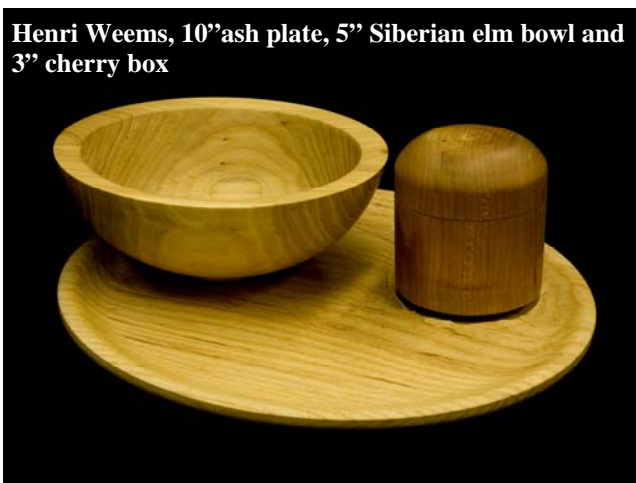
**Brad Homman, and 7" dyed curly maple bowl**



**Steve Schwartz, Hand, holding a cherry bowl**



**Dean Swagert, Rose engine 9"**



**Henri Weems, 10"ash plate, 5" Siberian elm bowl and 3" cherry box**



**Yimin Zhuang, Sculptures of various woods**

Richard Sherwood, Newsletter Editor  
 Capital Area Woodturners (CAW)  
 11907 Bracken Court  
 Bowie, MD 20720-4480

***New CAW Members for October***

*Welcome! We are glad you have chosen to contribute your talents to our club. We look forward to the contributions you will make and the pieces you will bring in to Show-&-Tell. Your participation will add to our mutual love of woodturning and to our collective knowledge and skill. Membership in the CAW Chapter is open to anyone interested in the art and craft of woodturning.*



First Name	Last Name	City	State
Buddy	Baker	Woodbridge	VA
Matt	Barinholtz	Washington	DC
Frank	Donahoe	Alexandria	VA
James	Gillespie	Stafford	VA
John	Sullivan	Manassas	VA
Joe	Zadareky	Springfield	VA
Christine	Zender	Fairfax	VA